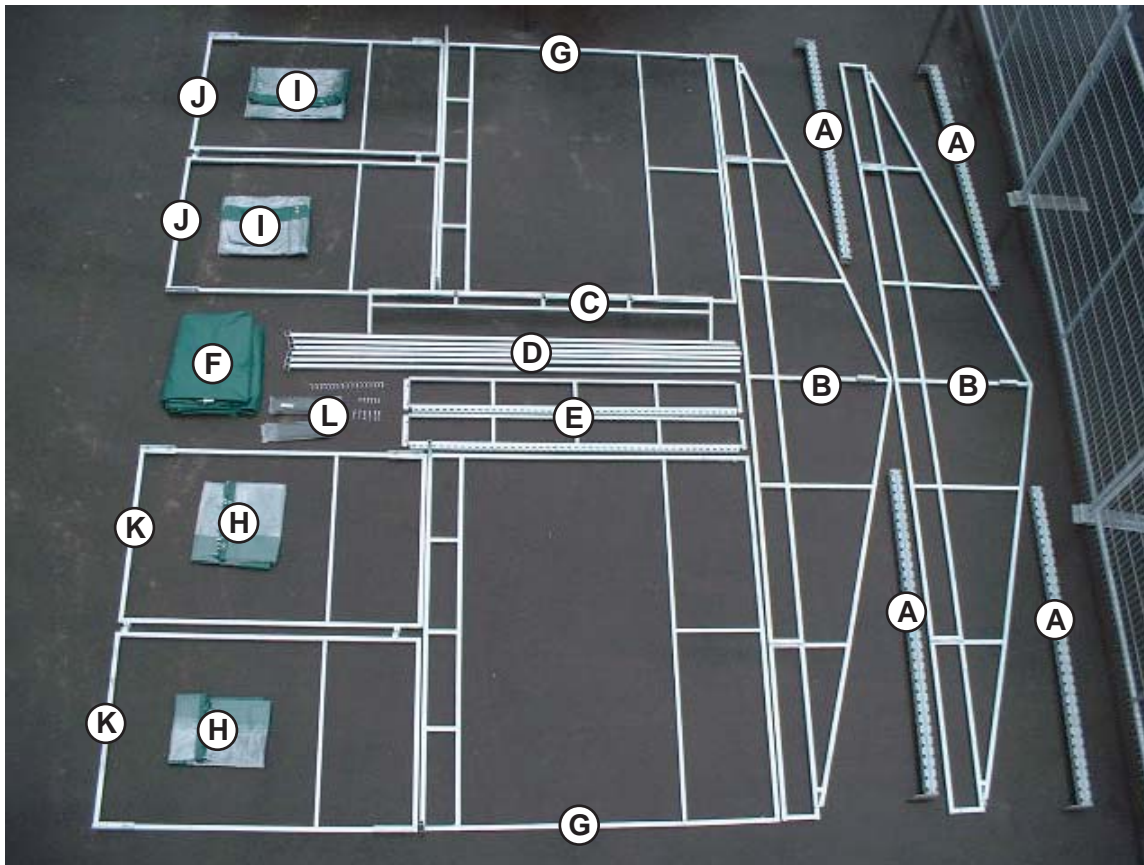




8' x 22' Cash Hut

INSTALLATION INSTRUCTIONS

PARTS LIST



- | | |
|--|--|
| (A) Posts w/ Feet (4pcs) | (J) Left End Panels (Front & Back) [4'3"x7'8"] (2pcs) |
| (B) 22' Peak Trusses (2pcs) | (K) Right End Panels (Front & Back) [4'3"x7'8"] (2pcs) |
| (C) 8' Centre Truss (1pc) | (L) Bolts: 3/8"x1" (10pcs) |
| (D) Purlins (6pcs) | (L) Bolts: 5/16"x2½" (14pcs) |
| (E) 8' Trusses w/ Track (2pcs) | (L) Nuts: 5/16" (14pcs) |
| (F) Vinyl Roof (1pc) | (L) "J" Locking Pins (16pcs) |
| (G) Side Panel [8'9"x8'8"] (2pcs) | (L) Tywraps (200pcs) |
| (H) Vinyl Inside Sliding Curtain(2pcs) | Corner Feet (4pcs) [not shown] |
| (I) Vinyl End Wrap (2pcs) | |

Questions?

Call VRE @ 1 (800) 499-4873 or visit www.vresystems.com

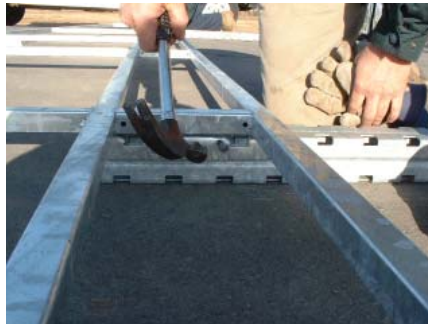
STEP 1 Choose location and check **PARTS LIST** for items (page 2).

STEP 2 Lay out 2 posts (feet pointing upwards), and 1 peak truss.

Position the truss so that the “hooks” on the bracket sit into the slots in the post. Tap the brackets with a hammer to ensure they are firmly in place.



STEP 3 IMPORTANT: Install the “J” locking pins through the bracket into the post. Make sure they sit so that the head is flush with the bracket.



STEP 4 Lay out 1 post and 1 - Truss w/ Track. Position the truss so that the “hooks” on the bracket sit into the slots in the post. Tap the brackets with a hammer to ensure they are in place. Install the “J” locking pins. Repeat for the second set.



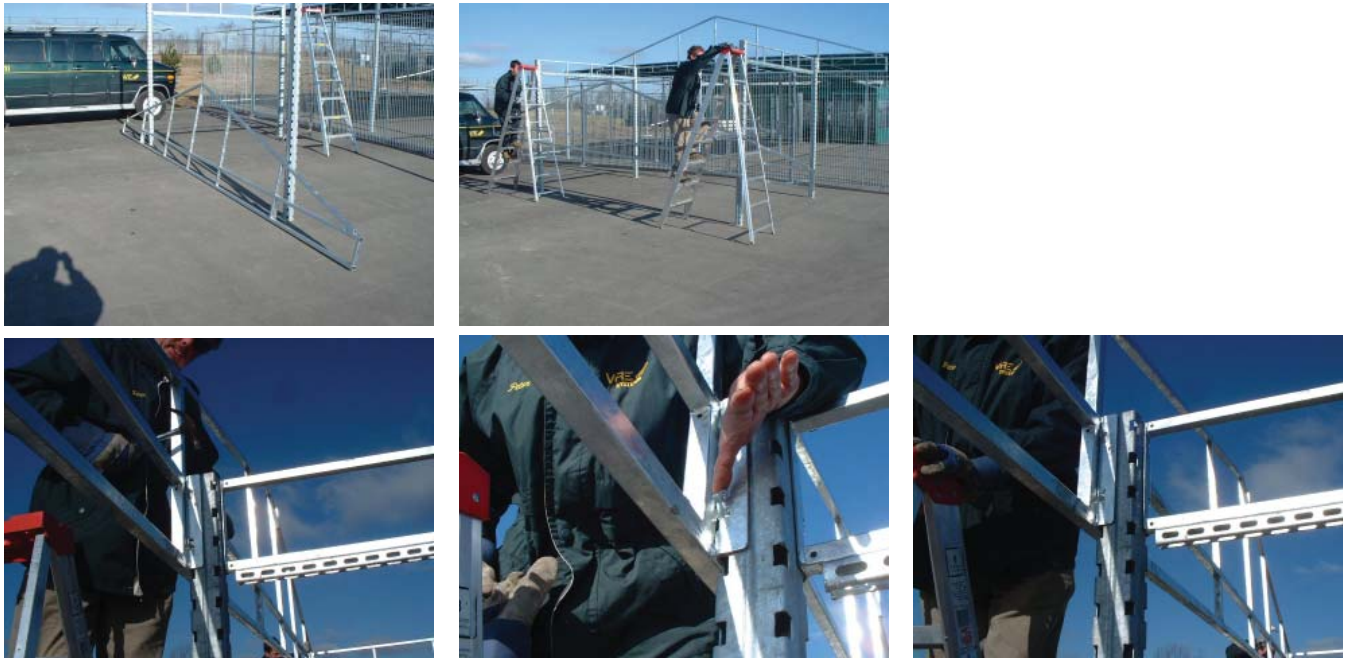
Questions?

Call VRE @ 1 (800) 499-4873 or visit www.vresystems.com

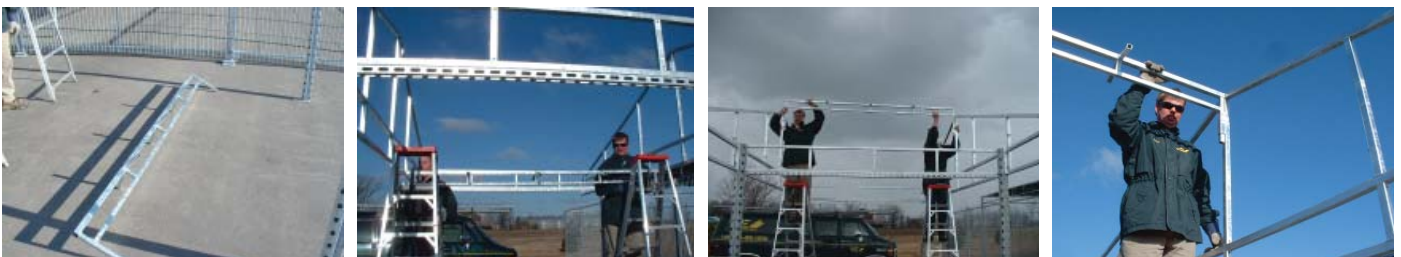
STEP 5 Stand up the peak truss with two posts (from Step 2). Attach the free end of both sets of the trusses w/ tracks (from Step 4) to the top of both posts attached to the peak truss. Install the "J" locking pins.



STEP 6 Install the 2nd peak truss. Lift to the top of the outer posts. Position the truss so that the "hooks" on the bracket sit into the slots in the post. Tap the brackets with a hammer to ensure they are in place. Install the "J" locking pins.



STEP 7 Install the centre truss (has 3 angled tubes welded on each side). Lift it to the top of the peak and slip each end into the sockets on the inside of each peak truss.



Questions?

Call VRE @ 1 (800) 499-4873 or visit www.vresystems.com

STEP 8 Lay out the four front and back end panels (4'3"x7'8") on the ground on either end of the peak trusses, 2 front and 2 back. Install by hooking the brackets into the posts (be sure the heights are the same). Install the "J" locking pins in each bracket.



STEP 9 Lay out the two side panels (8'9"x8'8") on the ground on either end of the peak trusses. Insert the adjustable feet in each corner and fasten in place with a bolt threaded into the welded-on nut.



STEP 10 Lift the outside wall panel into position and slide the top bars into the ends of the peak trusses.



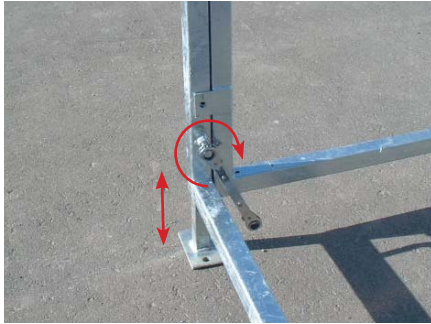
STEP 11 Ensure that the "U" brackets on the outside edge of the front and back end panels fit around the tube of the outside wall panels.



Questions?

Call VRE @ 1 (800) 499-4873 or visit www.vresystems.com

STEP 12 Adjust the adjustable feet to grade level. Ensure the bottom tube lines up with the bottom of the front and back end panels. Tighten bolt to secure in place.



STEP 13 Fasten the "U" brackets on the front and back end panels to the side panels using self-tapping screws. This method of fastening is designed to eliminate a bolt head protruding on the outside corner, which would cause excessive wear on the vinyl covering.



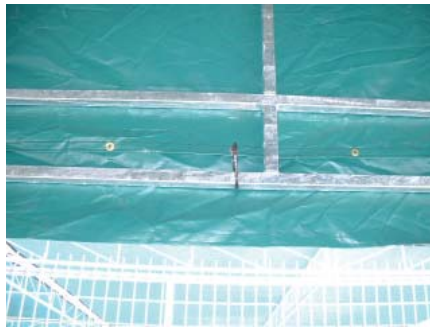
STEP 14 Lay out the 6 purlins. One at a time, slide one end of the purlin into the angled tube on the top centre truss and position the other end so that the "U" bracket sits over the top of the side wall panel. Repeat this step for all 6 purlins. Check that they are straight and parallel to the front and back peak trusses. Insert bolts and tighten with nuts.



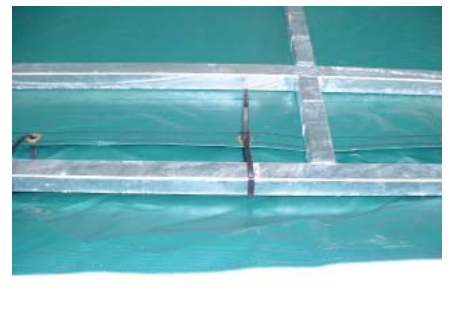
Questions?

Call VRE @ 1 (800) 499-4873 or visit www.vresystems.com

STEP 15 Unroll the vinyl roof cover. Position carefully onto the structure ensuring that it **DOES NOT SNAG!** Install 1 tywrap loosely at the centre, bottom of each peak truss. Install 2 tywraps loosely at each of the four corners. **DO NOT** cut off excess on tywraps!



STEP 16 Install tywraps loosely into all remaining grommets around the perimeter, starting with each corner, then working out from the centre of each side. Tighten the tywraps, starting with each corner, then working out from the centre of each side, until the vinyl is snug on the structure.



Questions?

Call VRE @ 1 (800) 499-4873 or visit www.vresystems.com

STEP 17 Lay out the vinyl end wrap. Position and install a tywrap loosely through the corner grommets and fasten to the vertical posts and corners.



STEP 18 Install tywraps loosely all of the way up each "end" post and also through the grommets along the top of the vinyl end wrap. Repeat for the bottom edge, installing the tywraps loosely.



STEP 19 Once all tywraps are in place, tighten them starting with the ones in each corner, then the ones in the centre of each side working your way outwards. Repeat this step for all sides until the vinyl is snug to the frame.

STEP 20 Repeat steps 17, 18 and 19 for the 2nd vinyl end wrap on the other side of the structure.

Questions?

Call VRE @ 1 (800) 499-4873 or visit www.vresystems.com

STEP 21 Lay out one inside sliding curtain.



STEP 22 Slide the flat washer-bolts into the track attached to the bottom of the inside trusses.

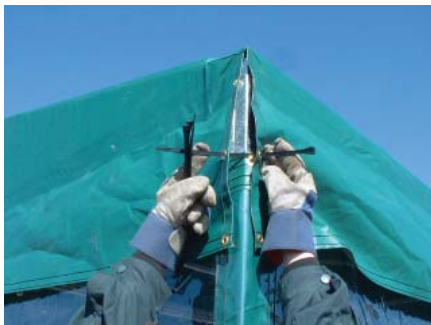


STEP 23 Insert the Velcro tabs through the "D" rings up one side. Pull the curtain snug and insert the Velcro tabs through the "D" rings on the other side.



STEP 24 Repeat steps 21, 22 and 23 for the 2nd inside sliding curtain.

STEP 25 Going back to the vinyl roof, install tywraps through the grommets on the outside corners together. This will hold the flaps down.



STEP 26 Anchor the Cash Hut to the ground through the holes in the post feet, and the feet on the 4 adjustable inserts.

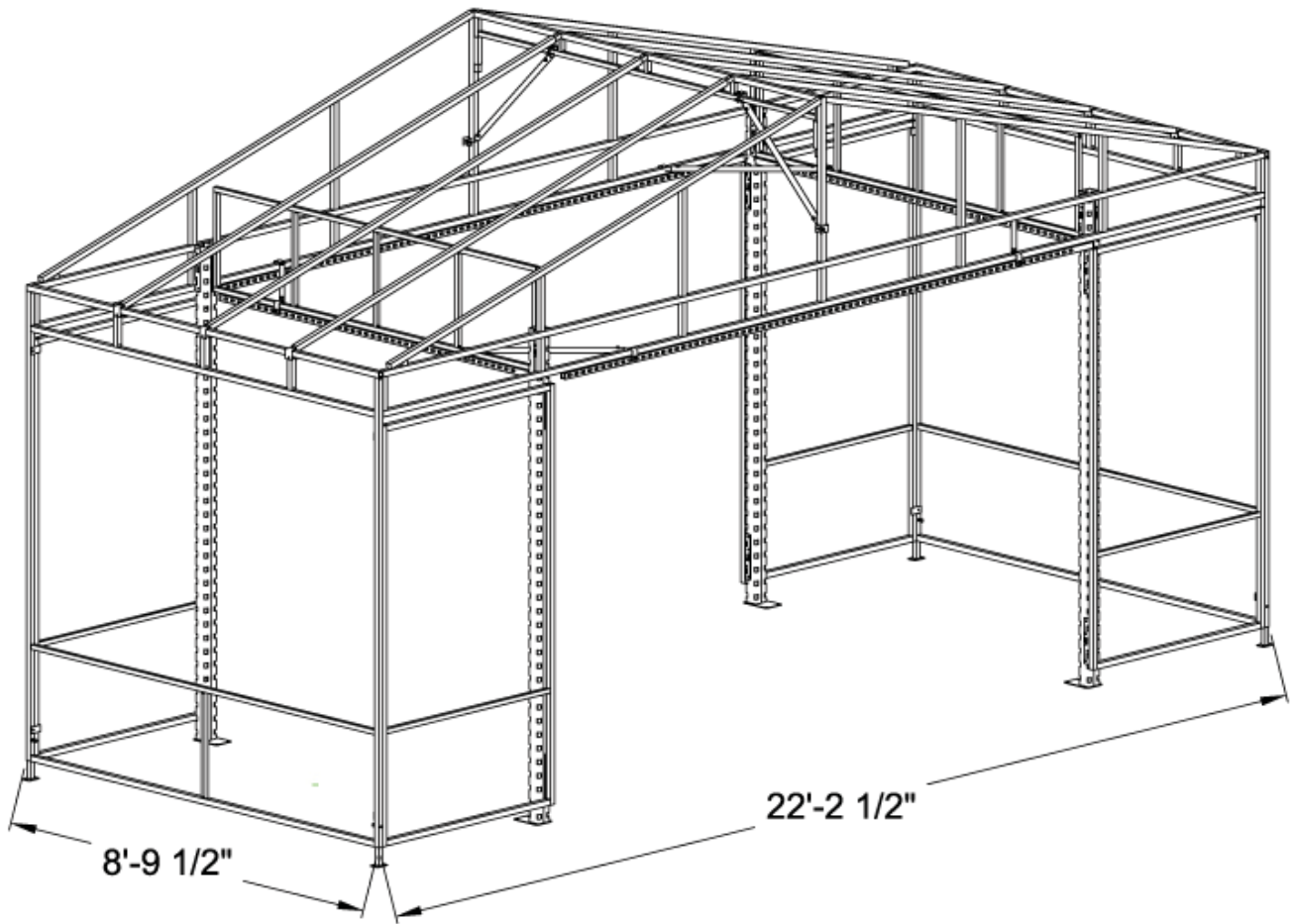
PLEASE NOTE:

- (a) It is recommended that the structure be secured on location to resist wind and weather
- (b) Vinyl cover **MUST** be removed **BEFORE** snowfall as this unit is not designed for snow-load conditions.

We at VRE would like to thank you for your purchase of this fine product!

Questions?

Call VRE @ 1 (800) 499-4873 or visit www.vresystems.com



8' x 22' Cash Hut

ASSEMBLY

Questions?

Call VRE @ 1 (800) 499-4873 or visit www.vresystems.com