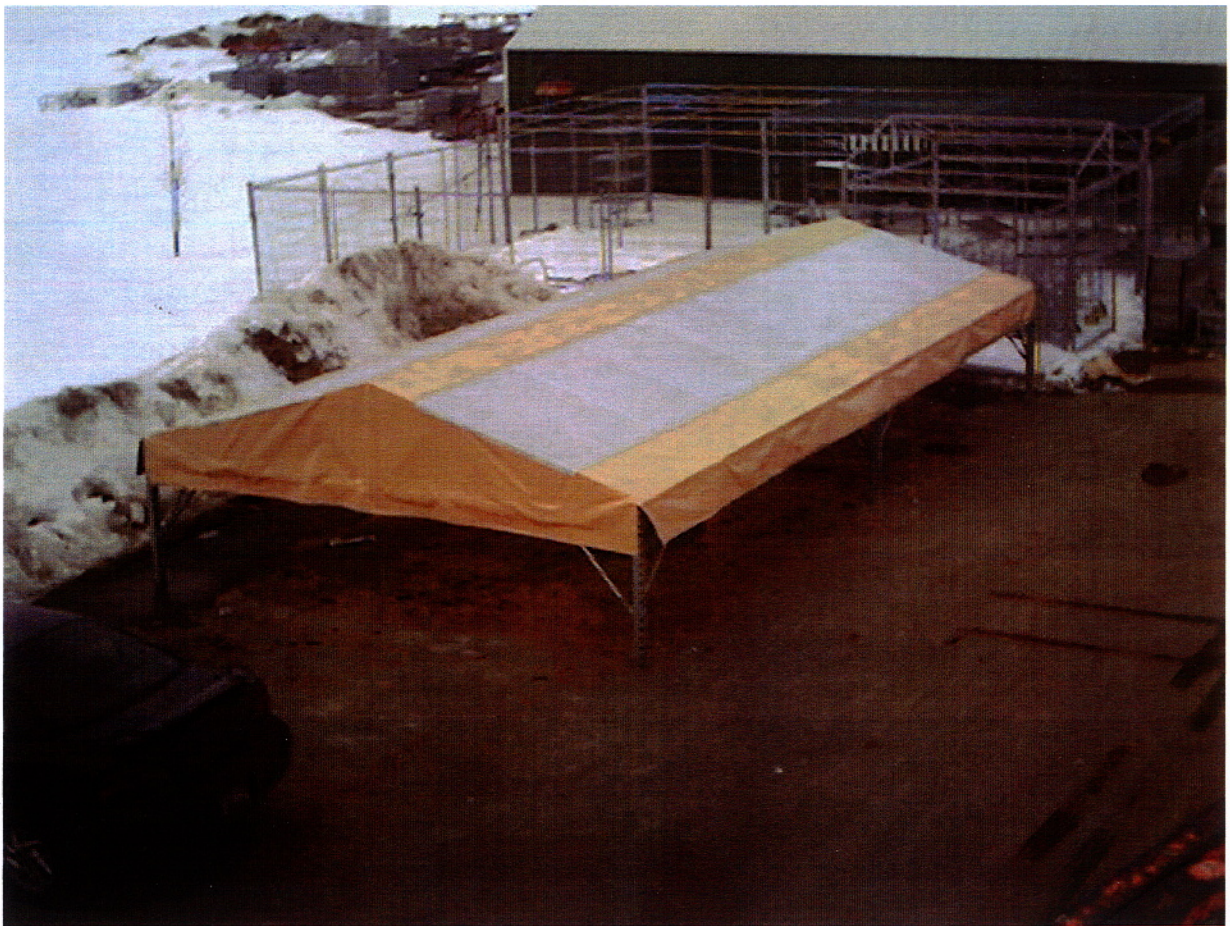




Peaked Structure Assembly



PEAKED STRUCTURE

Assembly Instructions

1. Prepare layout in desired location.
2. Check parts listing for the right quantity of parts.
3. Layout one gable truss with one sleeve welded on it, and two posts. *(See #1 & 2)*
4. Insert the truss end into the top of the post and tap in place to seat the two “truss fingers” into the post slots. *(See #3, & 4)*
5. Repeat step 4 on other side of gable truss.
6. **IMPORTANT:** Insert locking “J” pin thru hole in truss endplate and thru matching hole in post. Tap “J” pin in place. Check that the pin is completely inserted. *(See #5 & 6)*
7. Layout the side trusses and two posts, and repeat step 4 for both sides. *(See #7 & 8)*
8. **IMPORTANT:** Insert locking “J” pin. (Step 6) *(See # 9, 10 & 11)*
9. Lift up completed gable truss with posts. Raise one completed side truss with post and fasten together. (Repeat step 4) *(See #12 & 13)*
10. **IMPORTANT:** Insert locking “J” pin. (Step 6) *(See #14 & 15)*
11. Repeat step 9 for other side.
12. **IMPORTANT:** Insert locking “J” pin. (Step 6) *(See #16)*
13. If you have more than one section of structure, take the gable truss with two sleeves welded on it and attach it to the two posts. (Repeat step 4) If just one section of structure, use the gable truss with one sleeve welded on it and attach it to the two posts. (Repeat step 4) *(See #17, 18, & 19)*
14. **IMPORTANT:** Insert locking “J” pin. (Step 6) *(See #20)*
15. Take one center peak truss and set the legs of the truss in the sleeves on the gable trusses. *(See #21,22, 23, 24, & 25)*
16. If you have more than one section of structure, repeat steps 7-12 for next section. If you have just one section, go to step 19.
17. Take the last gable truss with one sleeve welded on it, and attach it to the two posts. (Repeat step 4) *(See #18 & 19)*
18. Repeat step 15. *(See #21,22,23,24 & 25)*
19. Layout 8 roof purlins per structure.
20. Evenly space purlins 4 per side. Set “U” bracket at the end of the purlin on the truss at the peak. *(See #26 & 27)*
21. Slide the sleeve into the end of the purlins and set on the lower truss. *(See # 28,29 & 30)*

Any Questions? Call VRE @ 1-800-499-4873

22. Be sure to keep the purlins straight and parallel to the truss. *(See #31)*
23. After you have all the purlins hung and spaced out evenly, bolt the “U” brackets to the truss. *(See #32)*
24. Look down the side of the truss and make sure that it is not bowing, insert a bolt and nut in the sleeve of the purlin to keep it from bowing in. NOTE: The canopy will keep the sleeves tight inward. *(See #33 & 34)*
25. Install two bracings at each corner post. Put bracing against post to figure out the height for the two “U” brackets and the piece of angle to be bolted to the post with the 4” bolt. *(See #35,36,37 & 38)*
26. Bolt the bottom of the bracing to the post and use the 1” square u-bolt to attach the top of the bracing to the bottom of the truss. Repeat this at all four corners. *(See #39 & 40)*
27. If you have a double structure, you will have to brace the center posts with three braces. *(See #41 & 42)*
28. Take the canopy and find the end. Lift it carefully to the peak of the structure. Unroll it along the peak truss. *(See #43)*
29. Spread the canopy carefully over the whole structure. *(See #44,45,46,47.48 & 49)*
30. Loosely install two tywraps at the four corners. NOTE: Do not cut off the excess of the tywrap. *(See #50)*
31. Loosely install all other tywraps in the rest if the canopy.
32. Start with one corner and snug up the tywrap, making sure that the gable seam is at the corner of the truss. (Repeat at all four corners)
33. Snug up the tywraps on the gables first, making sure that the seam stays on the corner of the truss. *(See #51)*
34. Start partially tightening up the sides of the canopy starting at the center and work towards the post.
35. Be sure to snug up both sides to ensure the canopy stays centered.
36. Further tighten each tywrap using the same pattern until canopy is tight.
37. Tywrap the grommets on the outside corners together to hold the flap down. *(See #52)*
38. Anchor the structure thru the holes in the post feet.

NOTE: The structure is NOT engineered to withstand a snow load. Canopy must be removed before snowfall.

WE, at VRE, would like to thank you for your valued business!!

Any Questions? Call VRE @ 1-800-499-4873

PEAKED STRUCTURE

Parts List

Single Structure

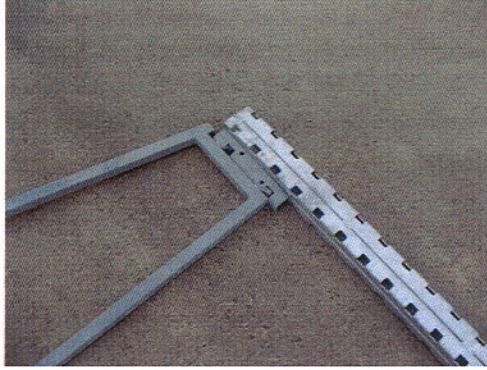
- 2 - Gable trusses (with sleeve welded on one side of the truss close to the top)
- 2 - Straight Trusses
- 1 - Center Truss (*to go into the sleeves on the gable trusses*) (*Square tubing on the ends*)
- 4 - Posts
- 8 - Cross Members (*with "U" bracket welded on one end.*)
- 8 - Post Bracings
- 8 - Sleeves (*for cross members with "U" bracket welded on the end.*)
- 8 - Truss Locks
- 22 - 5/16" x 2" Bolts With Nuts.
- 8 - "U" Brackets With Two Holes (*For The Post Bracing*)
- 4 - Angle Pieces with Two Holes (*for the Post Bracing*)
- 8 - 5/16" x 4" Bolts With Nuts
- 4 - 5/16" x 1" Bolts With Nuts
- 100 - Tywraps
- 8 - 1" Square "U" Bolts with Nuts

Double Structure

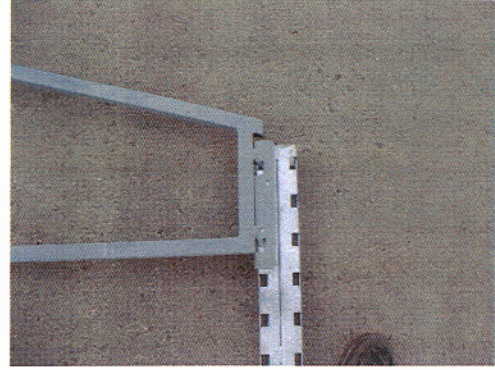
- 2 - Gable trusses (with sleeve welded on **one** side of the truss close to the top)
- 1 - Gable truss (with sleeve welded on **both** sides of the truss close to the top)
- 4 - Straight Trusses
- 2 - Center Truss (*to go into the sleeves on the gable trusses*) (*Square tubing on the ends*)
- 6 - Posts
- 16 - Cross Members (*with "U" bracket welded on one end.*)
- 14 - Post Bracings
- 16 - Sleeves (*for cross members with "U" bracket welded on the end.*)
- 14 - Truss Locks
- 48 - 5/16" x 2" Bolts With Nuts.
- 12 - "U" Brackets With Two Holes (*For The Post Bracing*)
- 6 - Angle Pieces with Two Holes (*for the Post Bracing*)
- 12 - 5/16" x 4" Bolts With Nuts
- 6 - 5/16" x 1" Bolts With Nuts
- 200 - Tywraps
- 12 - 1" Square "U" Bolts with Nuts



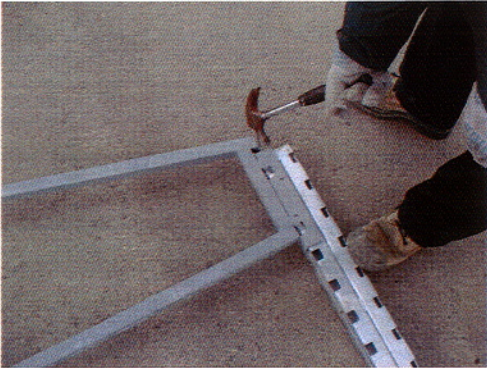
001.JPG



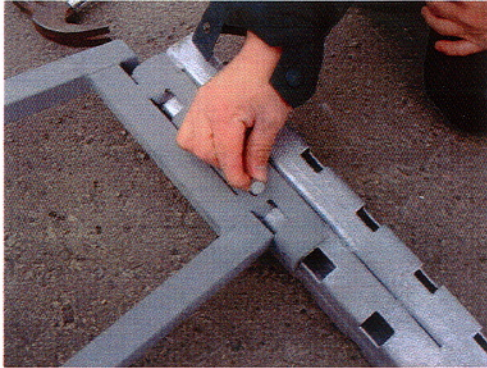
002.BMP



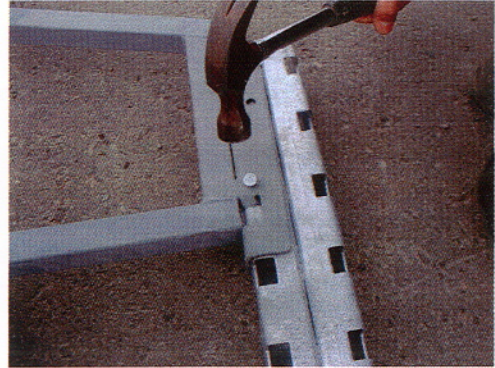
003.BMP



004.BMP



005.BMP



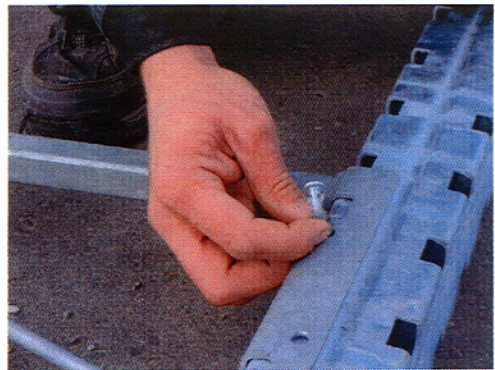
006.BMP



007.JPG



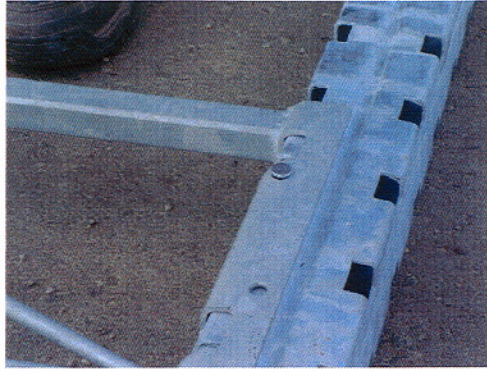
008.BMP



009.BMP



010.BMP



011.BMP



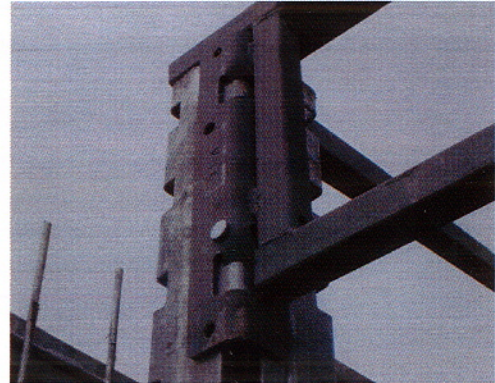
012.JPG



013.BMP



014.BMP



015.JPG



016.BMP



017.JPG



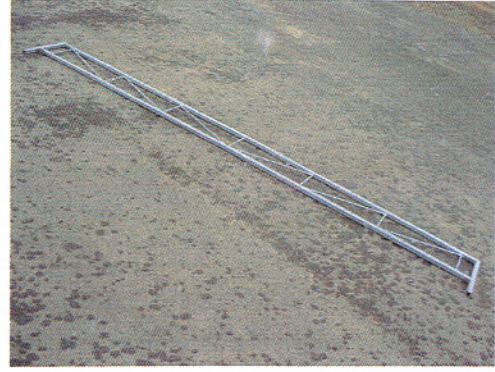
018.BMP



019.JPG



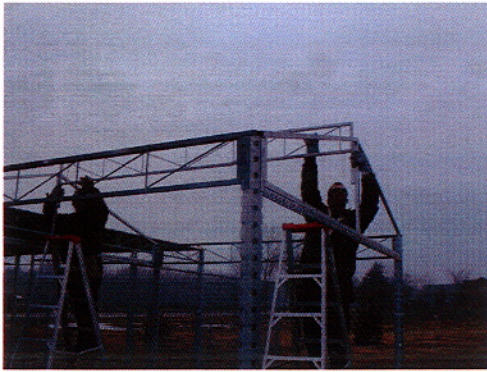
020.BMP



021.BMP



022.BMP



023.BMP



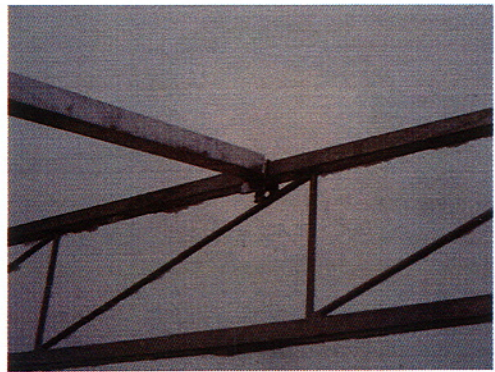
024.BMP



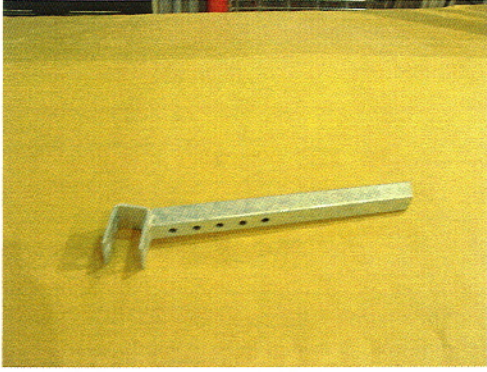
025.BMP



026.JPG



027.JPG



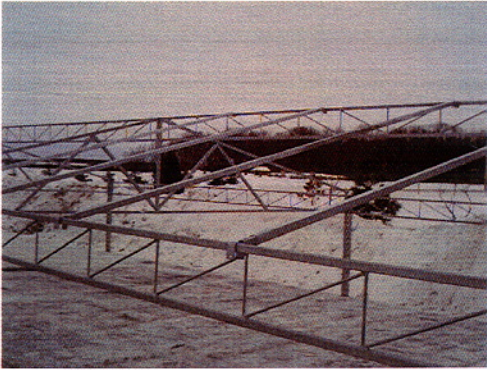
028.JPG



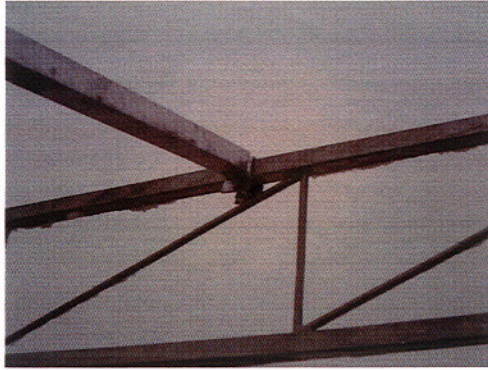
029.JPG



030.JPG



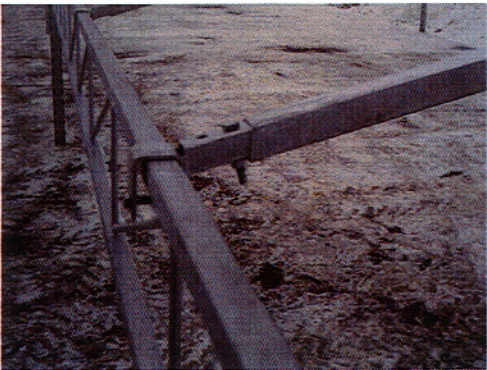
031.JPG



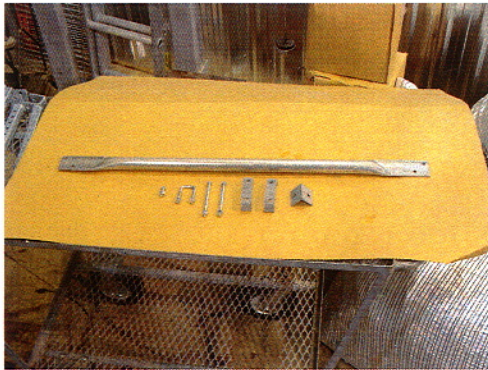
032.JPG



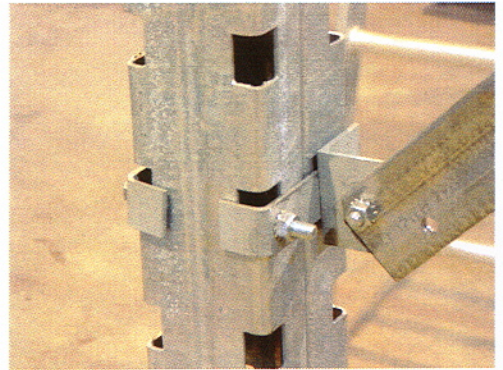
033.JPG



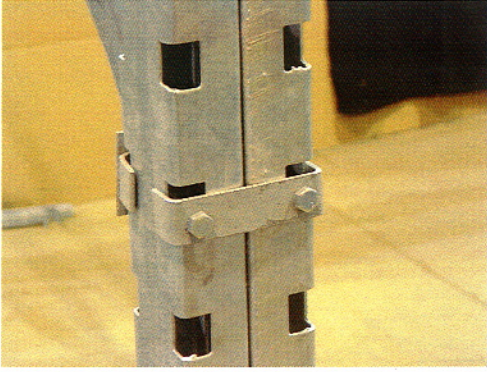
034.JPG



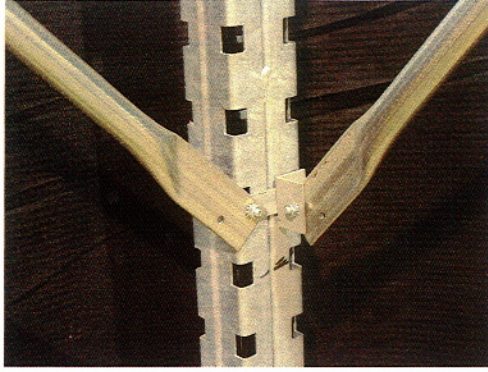
035.JPG



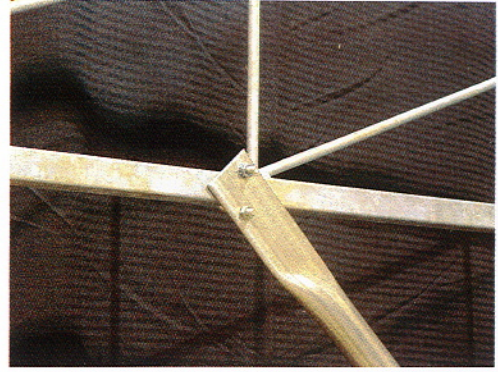
036.JPG



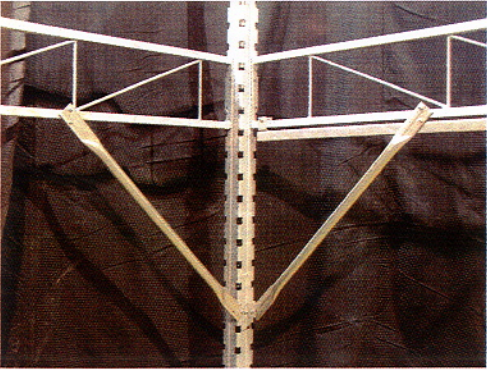
037.JPG



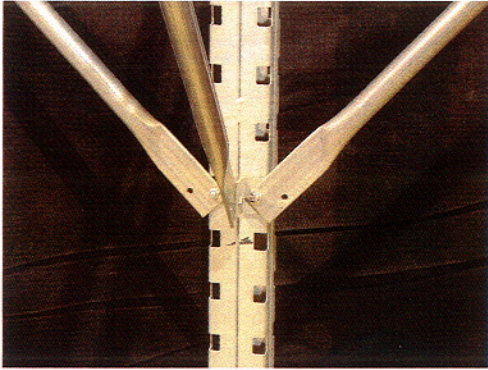
038.JPG



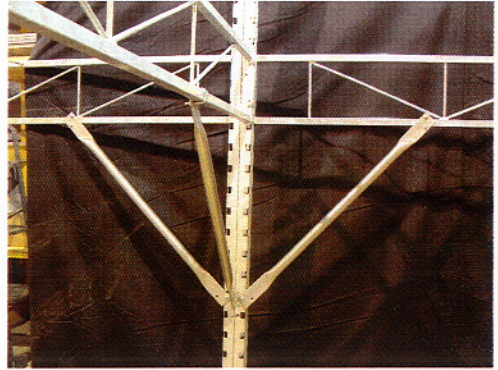
039.JPG



040.JPG



041.JPG



042.JPG



043.BMP



044.JPG



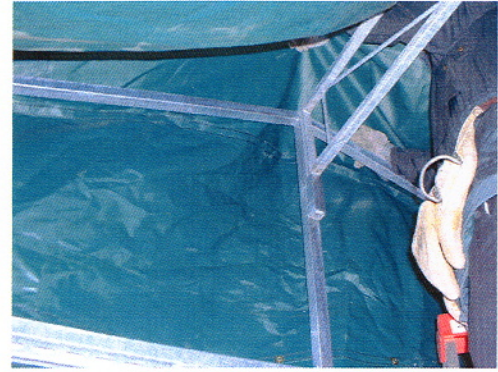
045.BMP



046.BMP



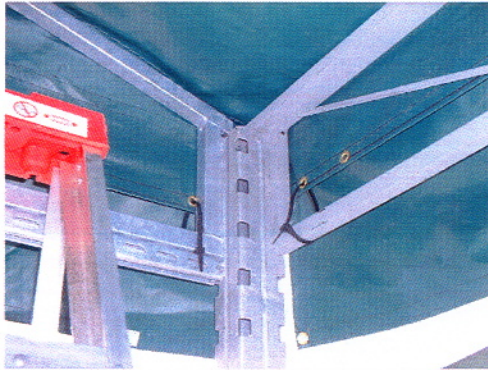
047.BMP



048.BMP



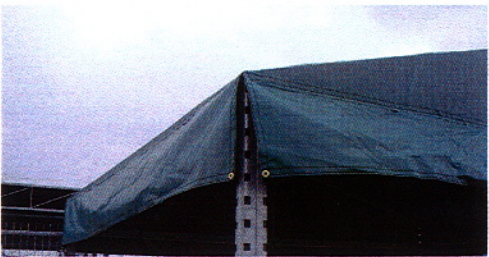
049.BMP



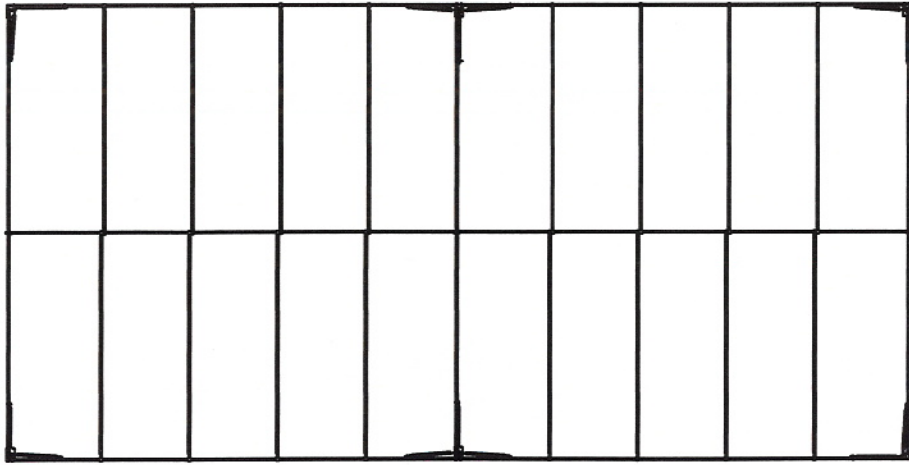
050.BMP



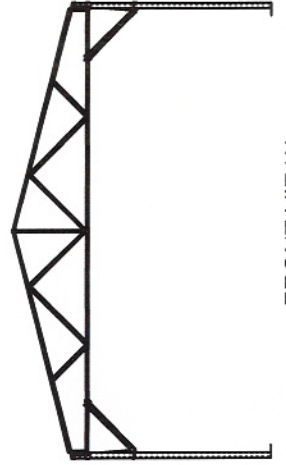
051.JPG



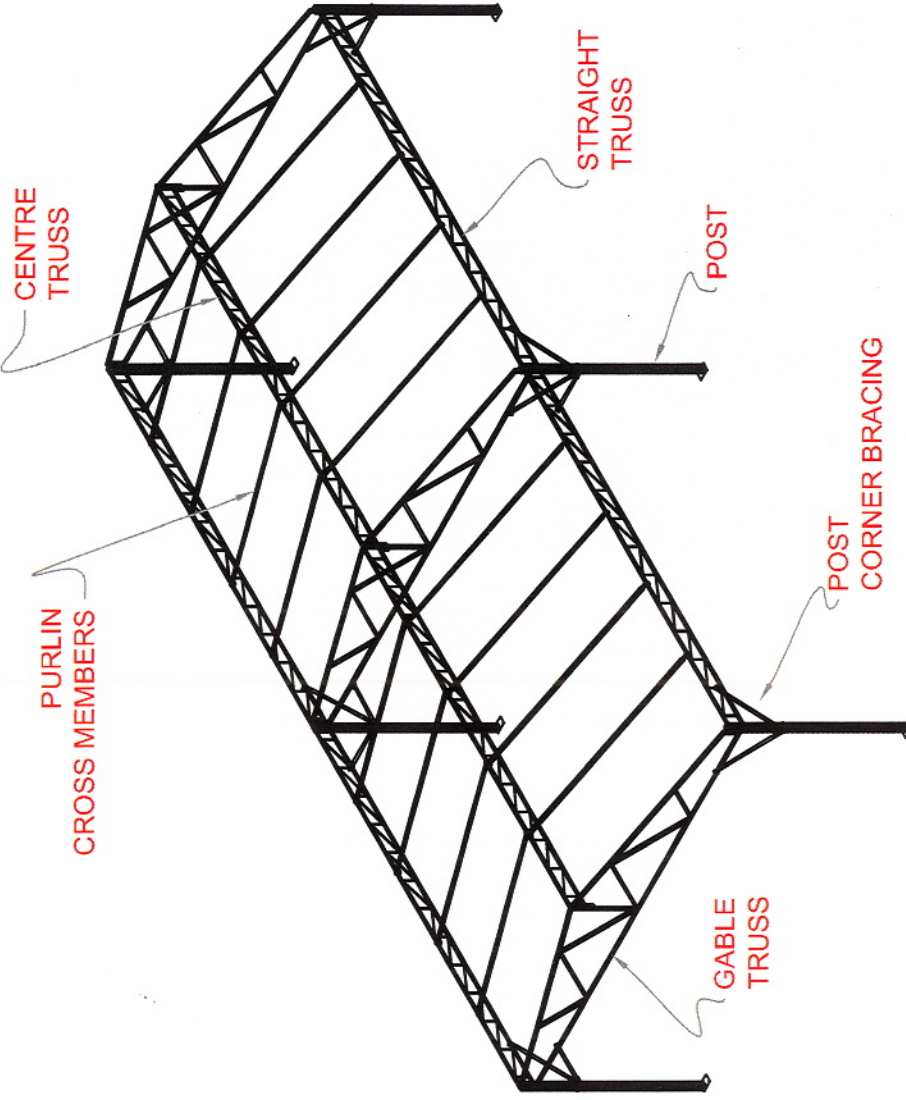
052.JPG



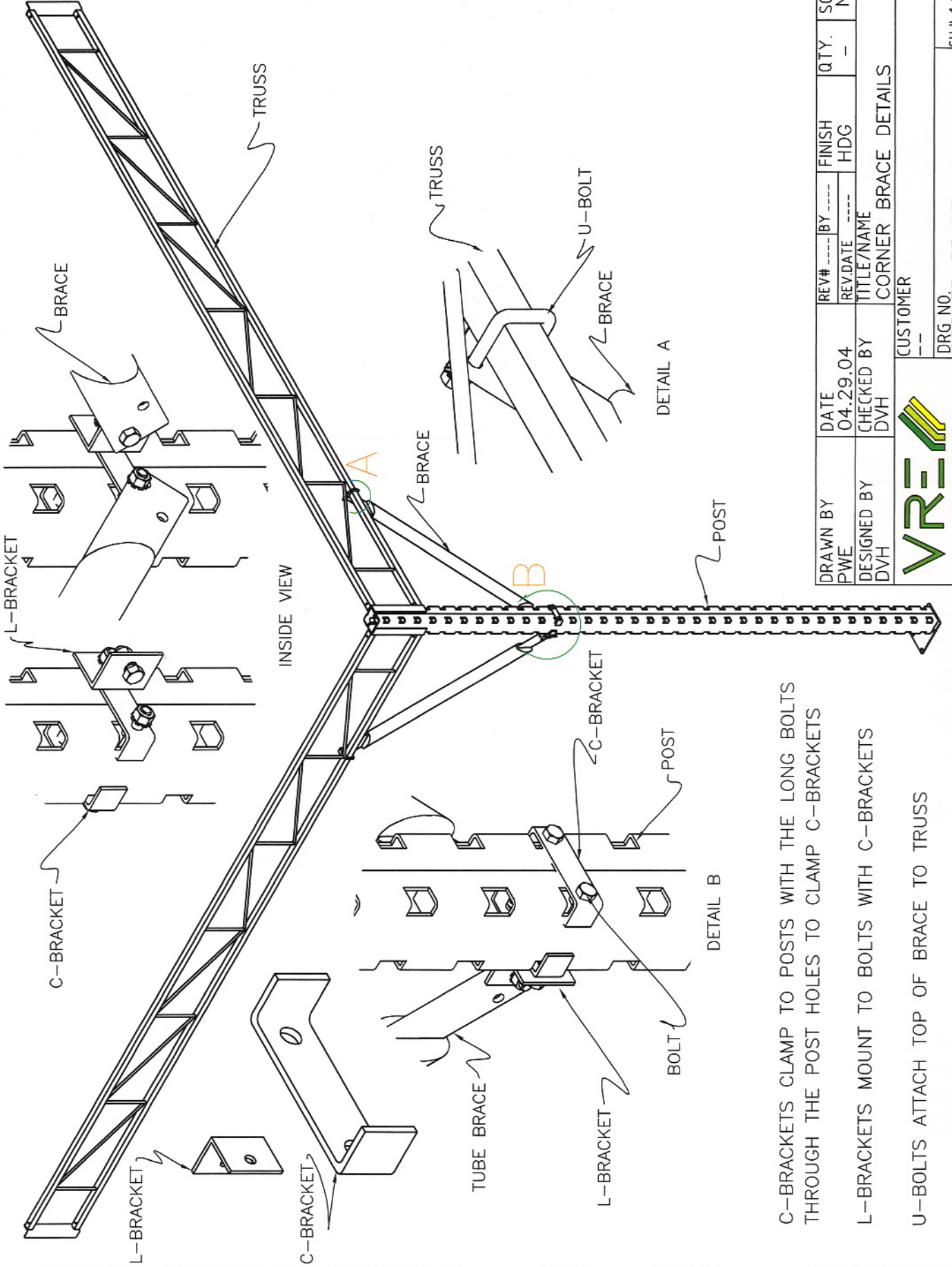
TOP VIEW



FRONT VIEW W



DRAWN BY PWE	DATE 03.07.07	REV# ---- BY ----	FINISH HDG	QTY. 1	SCALE NTS
DESIGNED BY GVR	CHECKED BY ----	REV DATE ----	TITLE/NAME PEAKED STRUCTURE		
VRE SHADE & SAVE		CUSTOMER --		DRG NO. PEAK_ID	
				SH.# 1 OF 1	UNITS (. & ') (mm)



DRAWN BY	DATE	REV#	BY	FINISH	QTY.	SCALE
PWE	04.29.04			HDC	-	NTS
DESIGNED BY	CHECKED BY	TITLE/NAME		CORNER BRACE DETAILS		
DVH	DVH	CUSTOMER				
DRG NO.				SH.# 1 OF 1		
CORNER_BRACE						



C-BRACKETS CLAMP TO POSTS WITH THE LONG BOLTS THROUGH THE POST HOLES TO CLAMP C-BRACKETS

L-BRACKETS MOUNT TO BOLTS WITH C-BRACKETS

U-BOLTS ATTACH TOP OF BRACE TO TRUSS



Any Questions? Call VRE toll-free at 1-800-499-4873 or (905) 945-8863