



PRODUCT CATALOGUE



04

Retail Turnkey Solutions

- 05 Turnkey Garden Centres
- 10 Seasonal Structures
- 14 Cashier Huts
- 16 Fencing
- 20 Security Cages
- 21 Watering Solutions

28

Displays

- 29 Display Benches
- 32 Merchandisers
- 33 Step Displays
- 35 Paving Stone Displays
- 37 Mulch Bins
- 38 Sign Holder Displays

47

Bins & Modules

- 47 Agristack™ & Berry Bins
- 47 Poultry Modules

22

Carts & Conveyance

- 23 Customer Service Carts
- 26 Transportation Carts

40

Screen Curtain Systems

- 42 Sliding Curtain System
- 42 Suspended Curtain System
- 43 Truss-to-Truss Peak System
- 43 Gutter-to-Gutter Flat System
- 44 Light Deprivation System
- 45 Roll Up Walls
- 46 Monorails

48

About

- 49 Installation & Notes
- 50 Terms & Conditions

TABLE OF CONTENTS

**RETAIL TURNKEY
SOLUTIONS &
STRUCTURES**



TURNKEY GARDEN CENTRE DESIGNS

With over 40 years of experience designing outdoor garden centers for a wide variety of customers, VRE has taken that knowledge and applied it to our new line of turnkey garden centres. Based on our top selling products, and input from customers, we have created five different layouts - one of which is certain to work for you! Give our retail team a call today to find out which one they suggest for your location, customer base & budget.

GARDEN CENTER A 100'L X 14'W SIDEWALK

- 20 - 36"W x 72"L Merchandisers
- 3 - 10' x 20' Flat Shade Structures 9' High
- 3 - 22"W x 59"L Transportation Carts, each with 3 Shelves
- 1 - 10'L x 12'W Cash Hut with 1 Cash Desk
- Portable Fencing on 3 sides, with 1 Swing Gate at one end

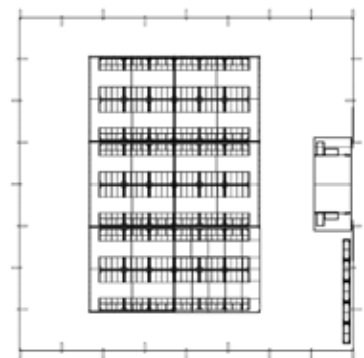
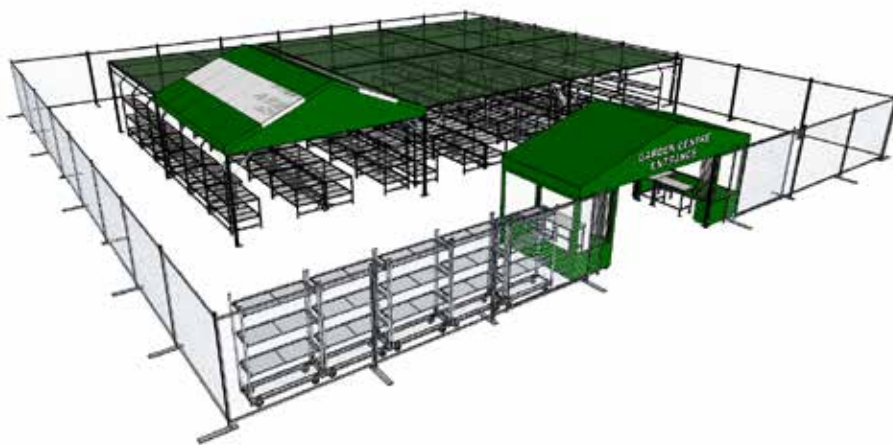


Garden Centre
In a Box

GARDEN CENTER B – 80' X 80' SQUARE

- 36 – 36"W x 72"L Merchandisers (6 rows of 6)
- 36 – 36"W x 72"L Display Benches (6 rows of 6)
- 5 – 20' x 20' Flat Shade Structures 9' High
- 1 – 20' x 20' Peak Vinyl Structure 9' High
- 5 – 22"W x 59"L Transportation Carts, each with 3 Shelves
- 1 – 8'L x 22'W Cash Hut with 2 Cash Desks
- Portable Fencing on all sides, with 2 Sliding Gates at entrance

This turnkey layout is best suited for larger independent home stores, and national big box stores with available parking lot space. It can also be installed next to a building.



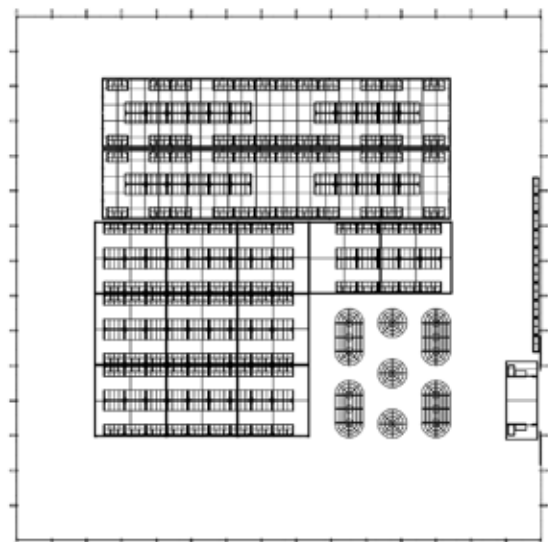
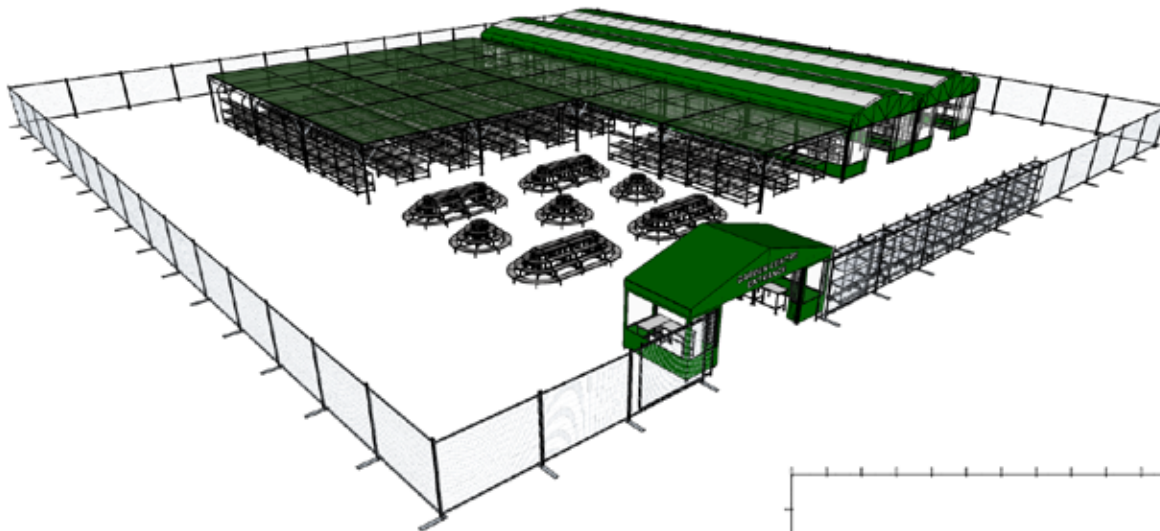
Overhead view



GARDEN CENTER C – 150' X 150' SQUARE

- 112 – 36" W x 72" L Merchandisers
- 108 – 36" W x 72" L Display Benches
- 2 – 20' W x 100' L Round Houses
- 11 – 20' x 20' Flat Shade Structures 9' High
- 5 – 22" W x 59" L Transportation Carts, each with 3 Shelves
- 4 – 4 Step 1/4 Round and 4 – 4 Step Square Displays
- 1 – 8' L x 22' W Cash Hut with 2 Cash Desks
- Portable Fencing on all sides, with 2 Sliding Gates at entrance

The perfect choice for large, box stores with significant space and strong seasonal customer base.

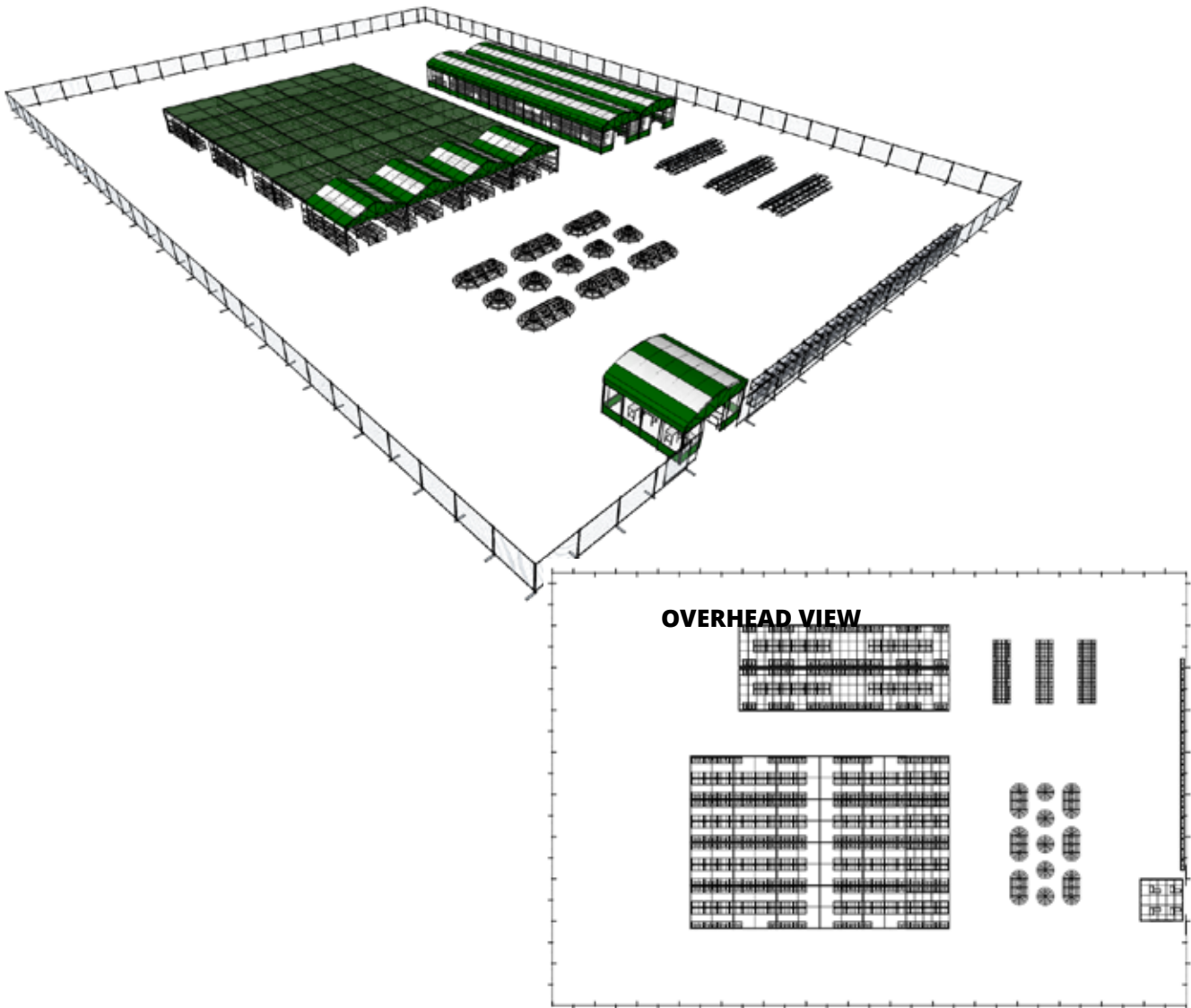


Overhead view

GARDEN CENTER D - 225'W X 300'L SQUARE

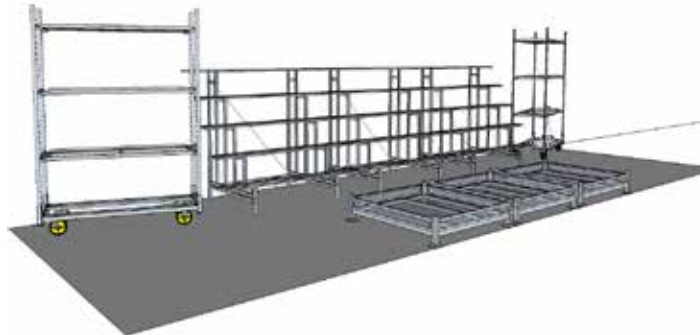
- 184 - 36"W x 72"L Merchandisers
- 188 - 36"W x 72"L Display Benches
- 2 - 20'W x 100'L Round Houses
- 24 - 20' x 20' Flat Shade Structures 9' High
- 20 - 22"W x 59"L Transportation Carts, each with 3 Shelves
- 17 - 4 Step 1/4 Round Displays and 12 - 4 Step Square Displays
- 18 - 10' Big Benches
- 1 - 20' x 20' Cash Hut with 4 Cash Desks
- Portable Fencing on all sides, with 2 Sliding Gates at entrance

This design could operate as a sole proprietorship, or as a stand alone garden centre with the addition of a small office building



GARDEN CENTER F – 30’L X 10’W MICRO

- 3 - 5 Step Square Displays
- 2 - 22”W x 59”L Transportation Carts, each with 3 Shelves
- 3 Mulch Bins



We know that you want to make the most of your garden center display space but sometimes it can be hard to visualize how best to maximize selling potential while being cost effective. Our experienced design team is here to help! Send us the dimensions and some photos or drawings of your area along with your thoughts on what you would like the overall look to be. Then our team will create a 3D layout using our structures and displays in their most functional layout for your space.



Whether you are looking to redesign your entire garden center, or you have one area that you know could be used more effectively, the VRE design team can show you the potential in your display space and make it easy for you to visualize the finished result. Let us help you make the most of your selling space.

SEASONAL STRUCTURES

VRE Systems structures provide a reliable, cost effective answer to expanding your retail space. These innovative structures provide clients with exciting aesthetic forms, large clear spans and soft natural light. The optional covers and durable finishes make VRE structures the right choice.

PEAK VINYL SHADERS

Part Number:

SSPKV1616A 16'W x 16'L (A) Freestanding unit with solid vinyl canopy (gable closed)

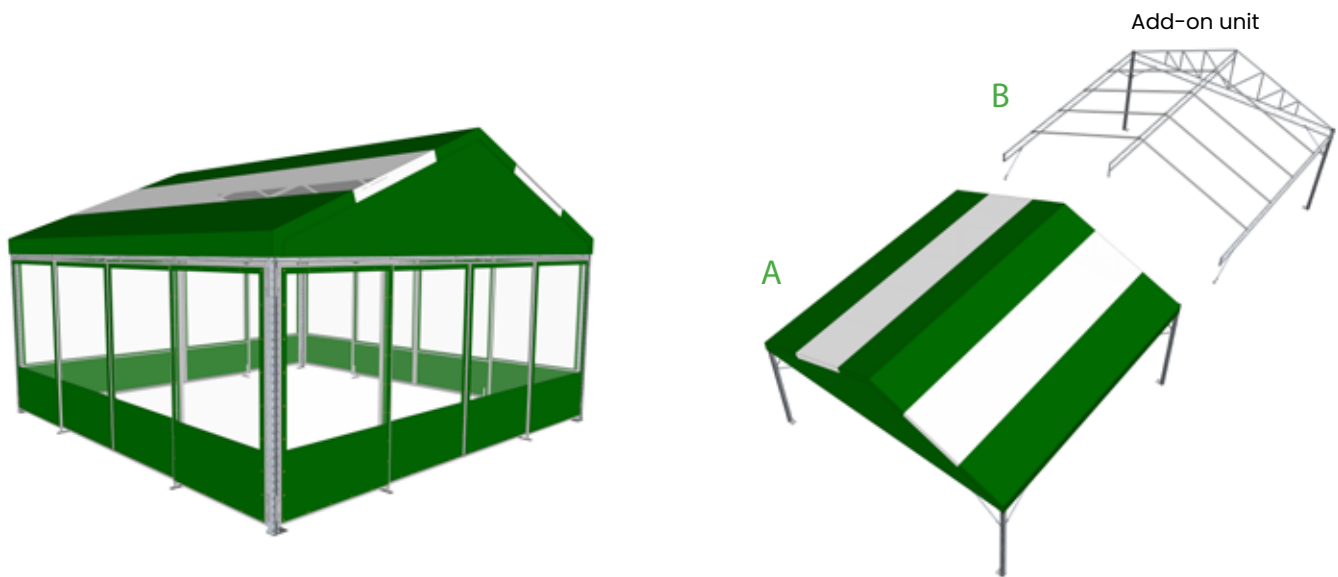
SSPKV1616B 16'W x 16'L (B) Add-on unit with solid vinyl canopy (gable closed)

SSPKV2020A 20'W x 20'L (A) Freestanding unit with solid vinyl canopy (gable closed)

SSPKV2020B 20'W x 20'L (B) Add-on unit with solid vinyl canopy (gable closed)

SSPK20WALL 20' x 20' x 9' Peak vinyl structure with optional doors/walls

SSPK20WALL 20' x 20' x 9' Peak vinyl structure with optional doors/walls



Peak structures are available with both vinyl and shade cloth roof options.



FLAT SHADERS

Part Number:

- SSSH1616A** 16'W x 16'L (A) Freestanding unit with shade canopy
- SSSH1616B** 16'W x 16'L (B) Add-on unit with shade canopy
- SSSH1616C** 16'W x 16'L (C) Add-on unit with shade canopy
- SSSH1616L** 16'W x 16'L Green replacement cover with tywraps

- SSSH2020A** 20'W x 20'L (A) Freestanding unit with shade canopy
- SSSH2020B** 20'W x 20'L (B) Add-on unit with shade canopy
- SSSH2020C** 20'W x 20'L (C) Add-on unit with shade canopy
- SSSH2020L** 20'W x 20'L (B) Green replacement cover with tywraps

FLAT SHADERS – ROLL UP WALLS

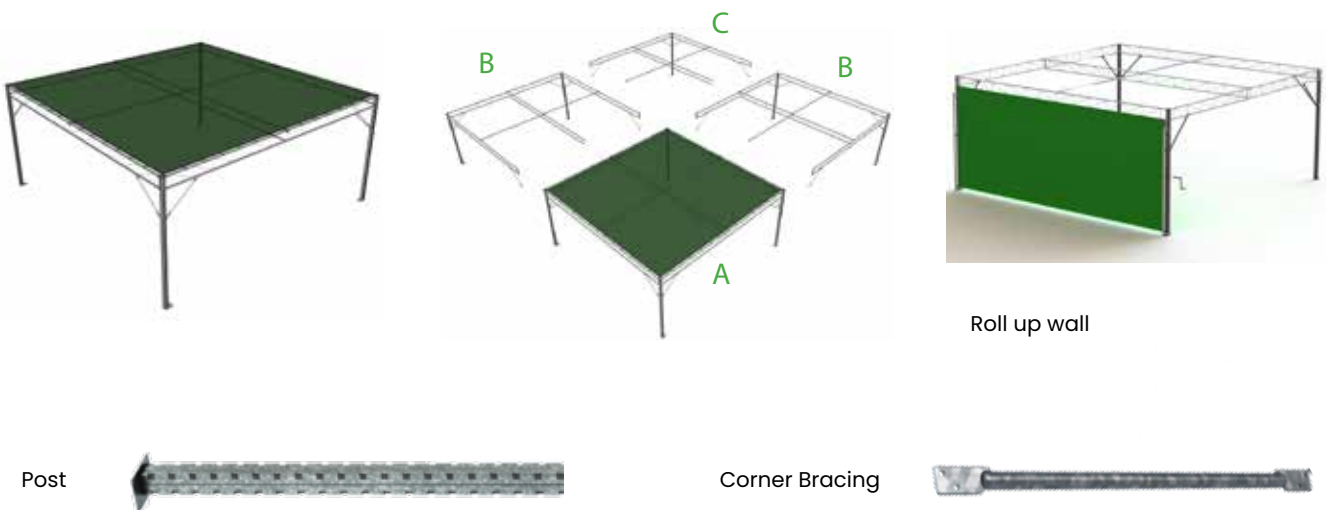
Part Number:

- SSSH16WALL** 16'L Roll up wall with crank
- SSSH20WALL** 20'L Roll up wall with crank

FLAT SHADERS – REPLACEMENT ITEMS

Part Number:

- SSSHBRACE** Corner bracing for wind resistance, required for all shade structures
- SSPOST108** Shader post, replacement corner post



ROUND HOUSE

Part Number:

Standard unit size is 20' x 20', units can be linked lengthwise

SSRND20A 20'W x 20'L (A) Freestanding unit with round vinyl canopy

SSRND20B 20'W x 20'L (B) Add-on unit with round vinyl canopy (2 posts)



Available in various colours



Due to the modular nature of VRE Seasonal Structures, you can customize your structure configuration to suit your needs. Modules can be put together to create larger and more versatile shade areas. Our standard 9' post gives you a spacious 8'2" clearance. Optional 10'H and 11'H posts are available.

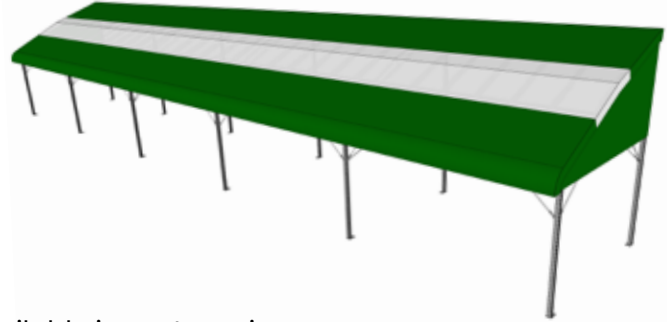
LEAN / SLOPED

Part Number:

Shown 12'x80' Sloped sidewalk structure - available in custom sizes

SSLP1820A 18'W X 20'L SLOPED VINYL STRUCTURE

12' x 80' Sloped sidewalk Structure



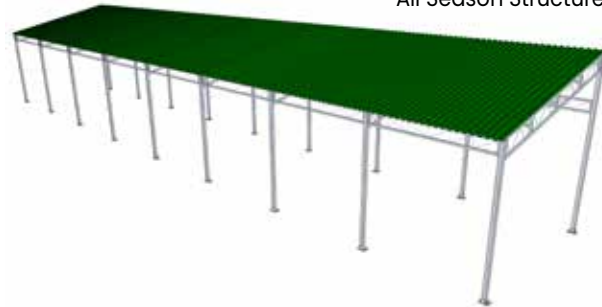
ALL SEASON

Part Number:

Shown 12'x80' Sloped sidewalk structure - available in custom sizes

SSLP1820A 18'W X 20'L SLOPED VINYL STRUCTURE

All Season Structure



VRE offers engineered lean-to solutions that are suitable for year-round use. Structures are stand alone, have a sheet metal roof and hot dip galvanized frame. It can be fully enclosed and protected with various wall and fencing options. Custom solutions are available.

CASHIER HUTS

Our Cashier Huts feature a galvanized steel frame and a green vinyl canopy. The sides and back panels are clear with solid vinyl on the bottom. The front sliding wall curtains allow for maximum flexibility and protection from the elements when working outside. With optional vinyl lettering available, you can custom tailor your cashier hut to suit your needs.

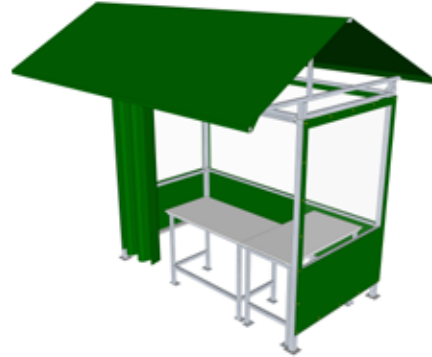


CASHIER HUT – 7'X10'

Part Number:

SSCASH710

- 7' x 10'
- Green vinyl canopy
- All steel construction, hot dip galv
- Sides and back panels are clear with solid edging
- Front sliding wall curtains
- Available in a variety of colours



CASHIER HUT – 10' X 12'

Part Number:

SSCASH1012

- 10' x 12'
- Green vinyl canopy
- All steel construction, hot dip galv
- Sides are clear with solid vinyl edging
- Front and back sliding wall curtains
- Available in a variety of colours



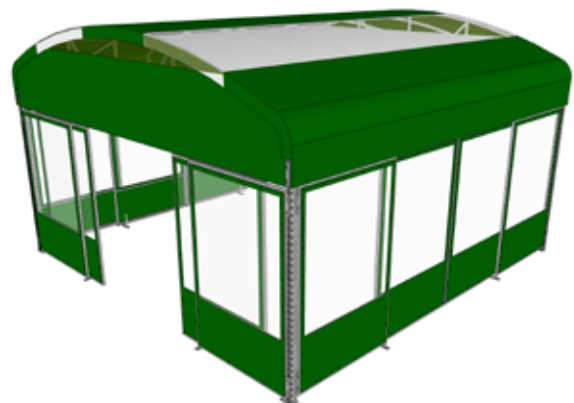
Shown with optional lettering

CASHIER HUT – ROUND 20' X 20'

Part Number:

SSRND20A

- 20' x 20'
- Green vinyl canopy
- All steel construction, hot dip galv
- Sides are clear with solid vinyl edging
- Front and back sliding wall curtains
- 2 fixed and 2 sliding door panels each side
- Available in a variety of colours



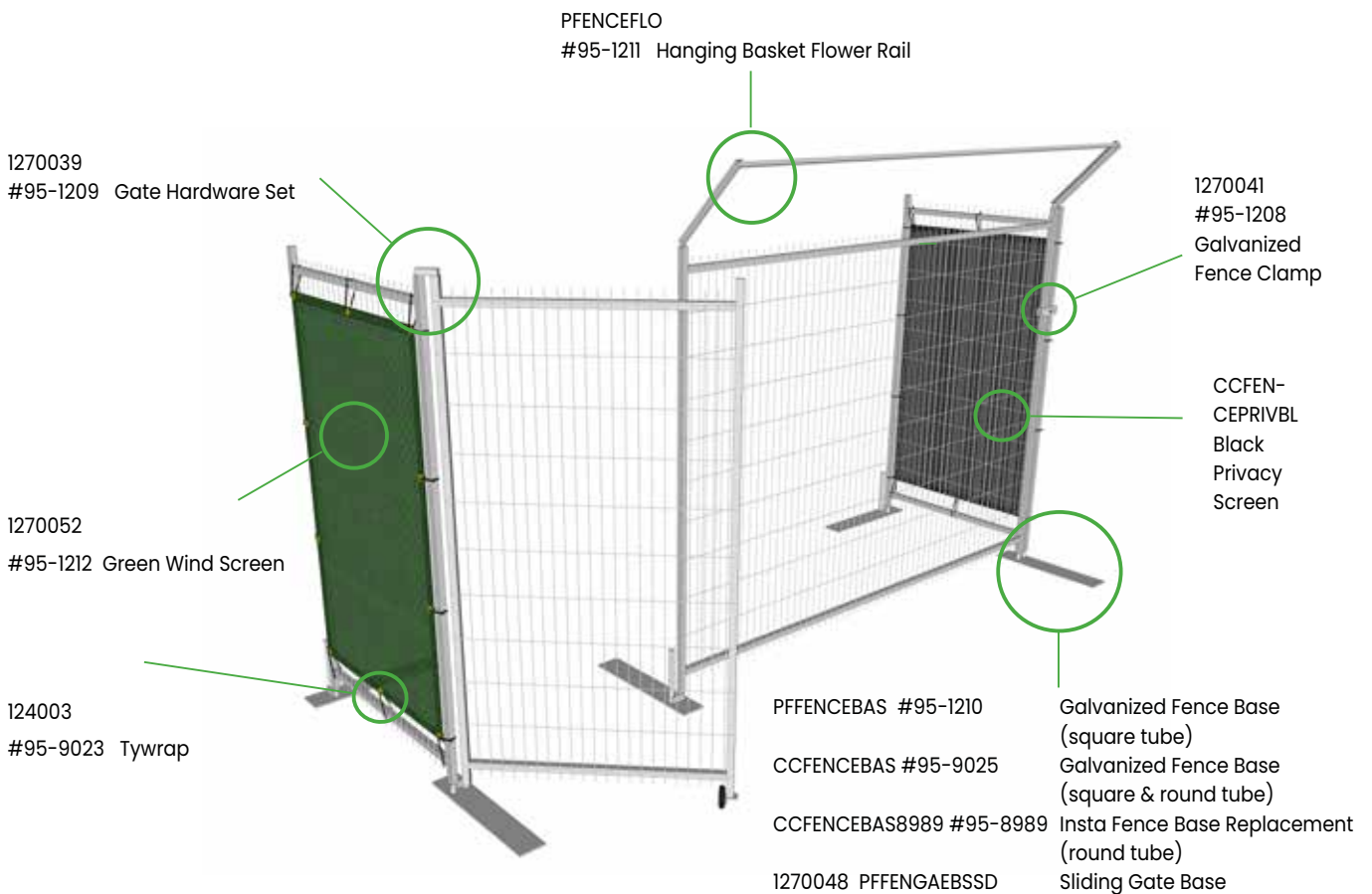
FENCING

Our printed fence screens are of the highest quality and are used by garden centers and retailers. They are a smart solution offering full colour design and the ability to change the look of your fence while making marketing easy and effective. Our printed fence screens are available in three sizes with custom options available.

FENCE PANELS

Part Number:

- PFENCE4** 4'W x 7'6"H Portable fence panel, panel only, no hardware
- PFENCE5** 5'W x 7'6"H Portable fence panel, panel only, no hardware
- PFENCE6** 6'W x 7'6"H Portable fence panel, panel only, no hardware
- PFENCE8** 8'W x 7'6"H Portable fence panel, panel only, no hardware
- PFENCE10** 8'W x 7'6"H Portable fence panel, panel only, no hardware



GREEN WINDSCREEN

Part Number:

1270052

- 72"H x 116"L
- Edges are taped with grommets
- Custom sizes available



BLACK PRIVACY SCREEN

Part Number:

CALL FOR DETAILS

- Edges are taped with grommets
- Custom sizes available
- Made to order



GATE HARDWARE SET

Part Number:

1270039

- Gate hardware set for swing gate
- Hardware for sliding gate also available



GALVANIZED FENCE CLAMP

Part Number:

1270041

- Secures fence panels together



GALVANIZED 10' HANGING BASKET RAIL

Part Number:

PFFENCEFLO

- Attaches onto individual fence panels
- Holds 6-10" baskets



GALVANIZED FENCE BASE

Part Number:

PFFENCEBAS For fence with square tube

CCFENCEBAS9025 Transition from square to round

CCFENCEBAS8989 For fence with round tube

1270048 For fence with square tube



PFFENCEBAS

CCFENCEBAS9025

CCFENCEBAS8989

1270048



Our printed fence screens are of the highest quality and used by garden centres and retailers. They are a smart solution offering full colour design and the ability to change the look of your fence while making marketing easy and effective. Our printed fence screens are available in three sizes with custom options available.

LARGE FENCE SCREENS

Part Number:
BA-158103

- For larger fencing, wrought iron fencing
- Fence Banner: 158"W x 103"H



MEDIUM FENCE SCREENS

Part Number:
BA-11672

- For VRE portable fencing
- Fence Banner: 116"W x 72"H



SMALL FENCE SCREENS

Part Number:
BA-50103

- Fence Banner: 50"W x 103"H



Banners shown are some of the options available.

SECURITY CAGES

VRE security cages are all made with heavy duty wire mesh sides with a durable angle frame. The mesh sides and door allow for full visibility into the cage. These cylinder storage cages offer full ventilation, strength and rigidity. The hinged door(s) can be padlocked for security. Each cage is made to accommodate either 20 lb or 40 lb cylinders with the addition/removal of optional adjustable shelves.

SECURITY CAGE - 12X20LB

Part Number:

PC3950-6

PC3950-12 Includes shelf

- 39"W x 28"D x 50"H
- Also fits 6x40lb cylinders by removing inner shelf



SECURITY CAGE - 18X20LB

Part Number:

PC3974-12

PC3974-18 Includes shelf

- 39"W x 28"D x 74"H
- Also fits 12x40lb cylinders by removing one inner shelf



SECURITY CAGE - 24X20LB

Part Number:

PC5274-16

PC3974-24 Includes shelf

- 52"W x 28"D x 74"H
- Also fits 16x40lb cylinders by removing one inner shelf



WATERING SOLUTIONS

GOOSENECK IRRIGATION KIT

Part Number:

1700010

- Gooseneck bracket/coupler, 9" connect hose 180 degree inverted mini wobbler and hardware



STRAIGHT IRRIGATION KIT

Part Number:

1700005

- Straight kit bracket/coupler, 9" connect hose 30PSI pressure regulator, upright wobbler and hardware



PORTABLE WATERING CART

Part Number:

PWWC20

- Significantly reduces hand water labour hours
- Hose can be connected overhead
- Uniform and all-inclusive diameter of 34 to 45 feet
- Attaches to VRE's merchandisers, displays, benching and structures
- Over 90 percent uniformity, 360-degree continuous distribution, all-inclusive application pattern
- Variable water droplet sizes for shrubs, trees, perennials
- Can be connected to an ON/OFF timer
- Instructions included in each package
- Give VRE the dimensions of your retail garden center, and we will determine the number of kits you need



CARTS & CONVEYANCE

CUSTOMER SERVICE CARTS

VRE Systems carts are engineered & designed with durability & quality in mind. Every cart features all steel construction with hot dip galvanization providing a maintenance-free finish. Suited for any of your transportation needs. Whether it is a retail nursery, garden centre, farm, or manufacturing facility

HANDI CART

Part Number:

CSHANDI

Shown with optional removable centre shelf:

CSHANDI2

- Top deck 22" x 48"
- Bottom deck 22" x 36"
- 8" solid wheels (2 swivel, 2 rigid)
- Holds up to 13 flats
- (with removable shelf option)
- Push/pull handle on both ends
- Capacity 500 lbs



SHOPPER CART

Part Number:

CSSHOPPER

Shown with optional removable centre shelf:

CSSHOPPER2

- 2 – 22" x 36" decks to move more product
- 8" solid wheels (2 swivel, 2 rigid)
- Capacity 500 lbs



HUSKY CART

Part Number:

CSHUSKY30FF

Shown with optional add-on deck:

CSHUSKYD

- 30" x 56" (Also available in 22" x 56")
- 10" swivel and 16" rigid air wheels
- Heavy duty applications
- Handle can be mounted on either side
- Capacity 600lbs



GARDEN CART

Part Number:

CS2240

Shown with optional add-on deck:

CS2240D

- 22" x 40" deck with front anti-tip bar
- 8" solid wheels
- Capacity 300lbs



BULK CART

Part Number:

CSBULKCART

- 22" x 40" deck with front anti-tip bar
- 8" solid wheels
- Ideal for moving heavy duty stone slabs, furniture, appliances and large plant containers
- Capacity 500lbs



FLIP-TOP NESTING CART

Part Number:

CSNCFTS

- Top shelf 20"W x 21"L
- Bottom shelf 20"W x 44"L x 44"H
- 8" wheels (2 swivel, 2 rigid)
- Ideal for various plant heights
- Ideal for moving bagged goods on lower shelf with plants on top shelf
- Carts nest with each other
- Optional engraved handle covers



TWO LEVEL NESTING CART

Part Number:

CSNC2

- 24"W x 44"L x 44"H
- Shelves 20"W x 37"L
- 8" wheels (2 swivel, 2 rigid)
- Upper level is stationary
- Additional support added to top shelf
- Carts nest with each other
- Optional engraved handle covers



Each application is different. That is why we offer many different models to meet the needs of even the most diverse operation. And while our carts vary in shape and size, they are identical in quality, durability, and versatility.

At VRE Systems, we have the carts you need. Call us and let us help you select the perfect customer service cart for your needs.

TRANSPORTATION CARTS

VRE Systems carts are engineered & designed with durability & quality in mind. Every cart features all steel construction with hot dip galvanization providing a maintenance-free finish. Suited for any of your transportation needs. Whether it is a retail nursery, garden centre, farm, or manufacturing facility



Our Transportation Carts bring efficiency and reliability to any horticultural and retail garden center operation. They are heavy duty, made of all steel construction and hot dip galvanized. You can choose from hook-in type or slide-in type shelving, bases and shelving of different widths and lengths, and a choice of caster and wheel options so that your cart meets your exact requirements.



HOOK-IN TRANSPORTATION CART

Part Number:

CT2259

- 22"W x 59"L
- Hook-in shelves
- All steel construction, hot dip galvanized
- Posts have openings every 2"
- Standard base expanded metal platform
- 5" wheels (2 swivel, 2 rigid), tow bar & pin
- *Available Sizes:*

22"W x 53"L 22"W x 63.5"L 22"W x 67"L

24"W x 67"L 28"W x 65"L 44"W x 46"L



SLIDE-IN TRANSPORTATION CART

Part Number:

CT2259SLIDE

- 22"W x 59"L
- Slide-in shelves
- All steel construction, hot dip galvanized
- Posts have openings every 2"
- Standard base expanded metal platform
- 5" wheels (2 swivel, 2 rigid), tow bar & pin
- *Available Sizes:*

22"W x 53"L 22"W x 63.5"L 22"W x 67"L

24"W x 67"L 28"W x 65"L 44"W x 46"L



Bases, shelves & poles sold separately



DISPLAYS

DISPLAY BENCHES

Our Display Benches are 72"L x 35"H, available in 22", 36" or 44" depths. They feature 2 adjustable shelves which can be tilted to suit your needs. With one 3-sided base and 4-35" long poles, our display benches provide a perfect way to display your product. All VRE benches are hot dip galvanized for durability. Our display benches can be assembled as a continuous run for even more versatility.

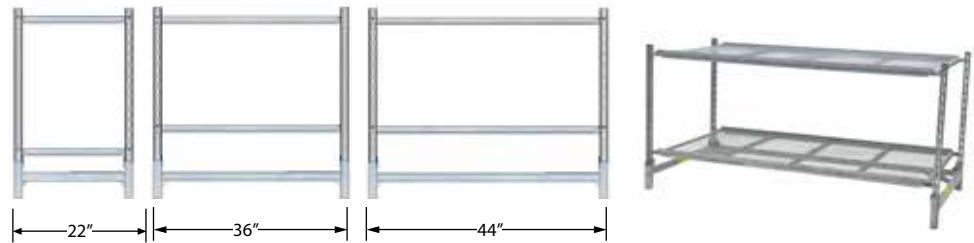
DISPLAY BENCHES

Part Number:

DRBENCH22 - 22"

DRBENCH36 - 36"

DRBENCH44 - 44"



- 72"L x 35"H
- Optional Wheels (set of 4)
DRMRCHC
4" swivel wheels with brakes
(only for 36" & 44" depth)
- All steel construction
hot dip galvanized



Our display benches can be assembled for a continuous run for even more versatility.



BIG BENCH

Part Number:

DRBENCHBG - 10'

- 10' model
- 10'W x 4'D x 43"H
- 3 wire mesh shelves – 22 1/2" deep
- 2 floor lock brakes
- Heavy duty, attractive display with easy mobility
- 4 yellow hub wheels, capacity 450 lb each
- Assembles and dismantles in minutes
- 10" ground clearance, 16" shelf clearance
- Optional hanging basket bar available (shown)
- Also available in an 8' long model



Optional Hang Bar Shown:

DRBENCHTPBAR
#95-9029



ISLAND BENCH

Part Number:

CCBENCHISLAND - 10'

- 10' model
- Includes 2 Big Benches back to back and 1 canopy
- Available in 8' model



Shown with 2 Island Benches side by side



PERENNIAL RACK

Part Number:

CCPERN22

- 22"D x 79"H x 72"L
- 4 adjustable tilting shelves 22"W x 72"L
- All steel construction, hot dip galv
- Powder coated painted in black optional
- Optional waterfall brackets: using 2 per shelf or 8 per rack, the waterfall brackets convert allowing the shelves to fit at a much greater angle with a variety of settings

DRWABRA



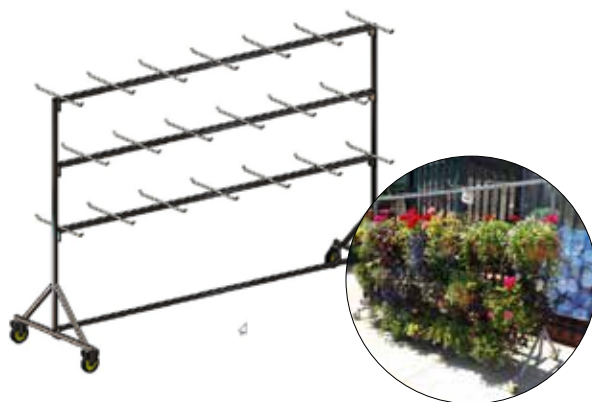
95-1317 & 95-1318
Perennial Rack with
Optional Waterfall \all Brackets

HANGING BASKET/WREATH DISPLAY

Part Number:

CCHANG40BK

- 34"D x 70"H x 108"L
- Holds up to 40-10" baskets for 30-12" baskets
- Can use as 2 or 3 tier
- 5" wheels, 2 with brake
- All steel construction, hot dip galv
- To reduce shipping cost some assembly required



HANGING BASKET DISPLAY RACK

Part Number:

DRHANGBSK

- 44"D x 98"H x 72"L
- Holds up to 42-10" baskets or 30-12" baskets
- Only occupies 22 sq. ft. of floor space
- 5" wheels, 2 with brake
- 3 adjustable/tilting shelf frames
- All steel construction, hot dip galv
- To reduce shipping cost some assemble is required



MERCHANDISERS

Our Merchandisers are available in 22", 36" or 44" depths, and are all 72" L x 94" H. With an adjustable 20" deep top shelf, hanging basket bar and 2 adjustable lower shelves that can be tilted, our merchandisers give you a perfect display, every time.

MERCHANDISERS

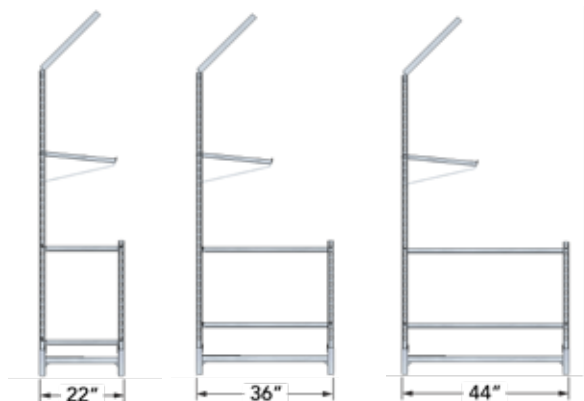
Part Number:

DRMRCH22 - 22' D

DRMRCH36 - 36' D

DRMRCH44 - 44' D

- 72"L x 94"H
- Optional Wheels (set of 4)
DRMRCHC
*4" swivel wheels with brakes
(only for 36" & 44" depth)*
- All steel construction
hot dip galvanized



MERCHANDISER SHELF

Part Number:

DRMRCH22S - 22' D

DRMRCH36S - 36' D

DRMRCH44S - 44' D



MERCHANDISER END CAP

Part Number:

CALL FOR DETAILS



Our merchandisers can be assembled for a continuous run for even more versatility.



STEP DISPLAYS

Our step display systems can be configured to accommodate your merchandising needs. Our quarter-round and square displays work together to provide you with endless options.

3 STEP 1/4 ROUND DISPLAY

Part Number:

DR31/432

- 36"D x 32"H x 36"L
- 12" shelf width
- All steel construction, hot dip galv
- Powder coated painted in black optional
- Optional Black Drip Tray sold separately
- Wheel options available

DR31/4TRAY



Shown painted black with black drip tray. Image right shown in full painted black configuration with hanging bar

3 STEP SQUARE DISPLAY

Part Number:

DR3SQ32

- 36"D x 32"H x 36"L
- 12" shelf width
- All steel construction, hot dip galv
- Powder coated painted in black optional
- Holds up to 6qty 6" plant pots per shelf*
- Optional Black Drip Tray
- Wheel options available

DR31/4TRAY



Shown with black drip tray

4 STEP 1/4 ROUND DISPLAY

Part Number:

DR41/4

- 48"D x 39"H x 48"L
- 12" shelf width
- All steel construction, hot dip galv
- Powder coated painted in black optional
- Wheel options available



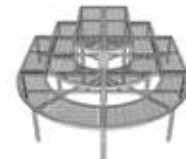
**AVAILABLE
CONFIGURATIONS
SHOWN RIGHT**



6 piece display



4 piece display



4 piece display

4 STEP SQUARE DISPLAY

Part Number:

DR4SQ

- 48"D x 39"H x 48"L
- 12" shelf width
- All steel construction, hot dip galv
- Powder coated painted in black optional
- Wheel options available



5 STEP 1/4 ROUND DISPLAY

Part Number:

DR51/4

- 40"D x 60"H x 40"L
- 8" shelf width
- All steel construction, hot dip galv
- Powder coated painted in black optional
- Wheel options available



5 STEP SQUARE DISPLAY

Part Number:

DR5SQ

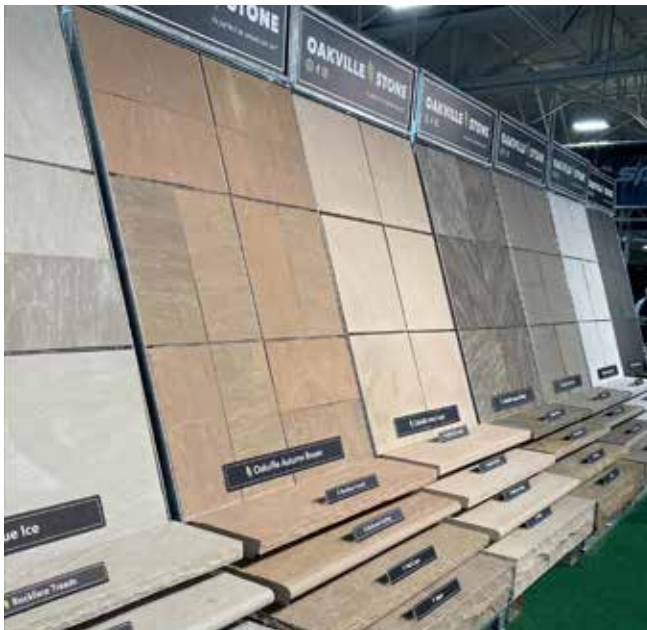
- 40"D x 60"H x 72"L
- 8" shelf width
- All steel construction, hot dip galv
- Powder coated painted in black optional
- Wheel options available



PAVING STONE DISPLAYS

Our paving stone display is tailor-made for landscape dealers who want to create a visually compelling and customer-friendly environment. It caters to professionals in the landscaping industry who understand the value of showcasing an extensive range of high-quality paving stones to attract and engage their clientele. Whether you specialize in residential landscaping projects or commercial developments, our display is designed to meet your needs.

Invest in our paving stone display and transform your showroom into a captivating destination that inspires customers and drives sales. Stand out from the competition and provide an unforgettable experience that leaves a lasting impression on your visitors.



PAVING STONE DISPLAY – PERMANENT

Part Number:

DRPD-PKD

- 48 1/4"W x 72 1/4"H
- Display type: Static
- Backing: Plywood
- All steel construction, hot dip galv
- Powder coated painted in black optional
- Sign Bracket is optional



PAVING STONE DISPLAY – CHANGEABLE

Part Number:

DRPD-WKD

- 48 1/4"W x 72 1/4"H
- Display type: Changeable
- Backing: 8'x2' 10-gauge wire mesh
- All steel construction, hot dip galv
- Powder coated painted in black optional
- Sign Bracket is optional



PAVING STONE DISPLAY – KNOCK DOWN/FLA

Part Number:

DRPD-KD

- 48 1/4"W x 72 1/4"H
- Display type: Knock Down
- Backing: wire mesh or plywood
- All steel construction, hot dip galv
- Powder coated painted in black optional
- Sign Bracket is optional



MULCH BINS

Our mulch bins are perfect for displaying and storing larger and heavier garden center items such as bags of mulch, gravel or potted shrubs, bushes and trees. The all-steel, hot dip galvanized frame is sturdy and durable. They can be lifted while filled with a hand truck or forklift, allowing you to rearrange your layout, clean and sweep underneath.

MULCH BIN

Part Number:

DRMULCHBIN

- 44"D x 46"L
- Stackable for compact storage
- All steel construction, hot dip galv
- Optional 35" Pole available to stack **CTPLS35-3 (set of 4)**
- Optional 79" Pole available to stack **CTPLS79 (set of 4)**
- Optional Mulch Tray available, 18 gage sheet metal **DRMULCHTRAYSM**



Shown stacked with 35" Mulch Bin Poles



Shown stacked with 79" Mulch Bin Poles and 446S expanded metal shelves



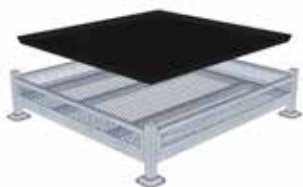
1 AND 2 GALLON POTS



1 GALLON POTS



2 GALLON POTS



Shown with tray insert



OPTIONAL TRAY



OPTIONAL SHELF

SIGN HOLDER DISPLAYS

Our sign holders are ideal for all displays. We offer a range from clear sign clips to wire holders, clip on sheet metal options and free standing signs.

CLEAR SIGN CLIP

Part Number:

1330028



- 5"L
- Clear
- Adaptable to any 1/8" or 3/16" edge
- Accepts wide range of lightweight materials
- Sold in packs of 100



WIRE SIGN HOLDER

Part Number:

1330026 (24"), 130027 (36")

- Available in 24" or 36"H
- Durable wire construction
- 2-prong base inserts into pot or bendable to hang from truss
- 10 per package



CLIP ON SHEET METAL SIGN HOLDER

Part Number:

1330068

- 11"W x 8.5"H
- All steel construction, hot dip galv
- Adaptable to VRE fence and most others
- 10 units per box



FREE STANDING SHEET METAL SIGN HOLDER

Part Number for 7"W x 5"H:

1330011	7X5 with base 18" leg
1330012	7X5, 30" leg only
1330066	7X5, 36" leg only

Part Number for 11"W x 7"H:

1330023	11X7 with base 18" leg
1330007	11X7, 24" leg only
1330008	11X7, 30" leg only
1330009	11X7, 36" leg only

Part Number for BASE

1330010	Base only
----------------	-----------



SIGN STANDS

Part Number:

1330010

- To be used with #1330068 sheet metal clip-on sign
- Galvanized steel 36" overall height
- Base slides under skid for stability



SCREEN CURTAIN SYSTEMS



SHADE & HEAT SCREEN SYSTEMS

Screen systems are your most cost effective method of heat retention, with quick payback, to reduce your greenhouse operating costs. Screen Systems are an integral part of the total greenhouse system and the VRE Shade & Save Systems™ are the industry leader with more than 35 years of experience. Our systems are custom designed to your specific needs which ensures optimum effectiveness. Systems consist of an electric motor driven gear box, complete with reversing controls and built in travel limit switches to control the open (uncovered) and closed (covered) positions and include an emergency cut out limit switch in case of malfunction by travel limit switches. Each drive unit mounted beneath the system is connected to a pipe drive shaft by universal joints and drive shaft support bearing plates with sealed ball bearings. The stainless steel drive cables move the curtains via a pulley arrangement. An aluminum tube carrier forms the connection between drive cables and a 3/4" diameter galvanized tube leading edge.

Stainless steel cloth gatherers guarantee small fabric bundles on all sliding type installations. The VRE aluminum extrusion forms a positive seal when the system is closed by means of flexible rubber sealing strip which prevents cold air from passing into the heated greenhouse area, ensuring optimum heat retention performance. The VRE extrusion also forms a structural support for the shading system. Polyester slide wires are provided to support sliding system curtains and stainless steel wires are supplied for suspended system fabric curtains. VRE Shade and Save Systems™ will optimize your growing conditions for many years to come.



Reduce costs
& increase profits
of 30% or more

VRE SLIDING CURTAIN SYSTEMS

The VRE sliding system consists of a network of parallel polyester lines on approximately 18" centres. The cover fabric is drawn back and forth lying on these lines. This system type is used most often in retrofit applications where space is very limited or areas where light is lost due to fabric bundle size is a critical factor. Sliding systems also use polyester lines above the curtain with "cloth gatherers" to produce the smallest fabric bundle size when the system is fully open. They can also be installed where only 4"-6" depth of travel space is available to prevent other equipment interference. The fabric will gather and bundle differently each time the curtain opens, so deterioration from sunlight is slower. Replacement fabric curtain costs are less, for sliding systems, due to minimal sewing requirement. These polyester support lines should also be replaced when new fabric is installed. These systems are also generally limited to a maximum

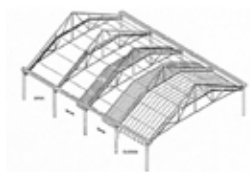


VRE SUSPENDED CURTAIN SYSTEMS

The VRE suspended system is adaptable only where sufficient space is available since it typically will require 9"-12" depth of travel area when system is fully open. A network of parallel stainless steel wires are installed to suspend the curtain fabric. These wires are spaced closer for open roof houses and wider apart for totally indoor applications. The fabric is then supplied with matching "loop tapes" sewn on the same interval spacing. "S" hooks are then installed in these loop tapes at 12" centres to produce accordion type bundles of fabric when the system is fully open. Replacement fabric curtain costs are higher for suspended curtains however, due to extensive sewing requirements. This system type can be used on greater travel distance spans. ie. 25"-32' Gutter-to-Gutter systems.

TRUSS-TO-TRUSS PEAK SYSTEM

- All of the covers in a given greenhouse or range of greenhouses can be tied together in order to move simultaneously and can be operated from the same drive unit.
- Due to its overhead obstruction installation, there is more usable space for hanging baskets, etc. and allows for the installation of extra lighting and the use of circulating fans and duct tubing when required.
- In most cases, there is no need to change any overhead heating, ventilation equipment or water lines.
- With this configuration of installation, the air trapped between a closed (covered) system and the greenhouse roof is minimized. On cold mornings, this reduces the time required to heat the cold air, allowing the system to be fully opened earlier and faster, increasing precious growing time. Unlimited choice of fabrics



Truss-to-Truss Peak



Truss-to-Truss Flat



Gutter-to-Gutter Flat

TRUSS-TO-TRUSS FLAT SYSTEM

- Covers installed in a Truss-to-Truss flat configuration are most economical in terms of hardware and amount of cover fabric used as well as being most efficient in heat retention capability.
- Suitable for single house installations, this configuration is also easily adapted to multiple house ranges for the future connection of additional houses.
- This installation is not recommended where there are obstructions such as posts, heating lines or hanging baskets, etc. at system elevation which would impeded the movement of the covers.

GUTTER-TO-GUTTER FLAT SYSTEM

- As with Truss-to-Truss flat configuration, covers installed in a Gutter-to-Gutter flat configuration are also economical in terms of hardware and amount of cover fabric used as well as being efficient in heat retention capability.
- This configuration is more suite to multiple house ranges or the future extension of the greenhouse length. This system type also requires 10"-12" clearance between bottom of gutter or drip trough and top of reinforced truss.
- Gutter-to-Gutter system is easiest to install, initial labour costs can be reduced. A minimum of 9 to 10 feet under gutter height is recommended to provide enough air space below the system for proper environmental control.
- To ensure properly supported covers, we recommend Gutter-to-Gutter system fabric sheets no wider than 21 feet for a sliding system and 32 feet for a suspended type system.
- This installation is not recommended where there are obstructions such as posts, heating lines or hanging baskets, irrigation booms, etc. which would impede the movement of the covers.



LIGHT DEPRIVATION SCREEN CURTAIN SYSTEMS

Controlling the light in your greenhouse is extremely important to ensure the highest productivity for your operation. Interruption of the dark period during flowering can cause many problems, possible harm to your crop and decreased profits. VRE Systems has the expertise to design a blackout/light deprivation system that will put you in control of your lighting environment.



Aluminum extrusion forms positive seal optimizing light dep & heat retention

ROLL UP WALLS

Roll up walls are commonly up to 150' in length per tube motor or longer lengths with RW45 gear drive units. VRE manufactures a 2" outside diameter (OD) customized aluminum profile primarily used for "twin roll" or "center" roll up applications. This means the 2" OD roll up tube is physically secured to the fabric at the center of the roll up wall height in the down position. As it travels up the wall, it rolls up the top half of the fabric at the same time as it rolls up the bottom half of the fabric wall. When fully rolled up, it forms a tight 4" or 5" diameter roll of fabric on the 2" OD tube now at the top of the covered wall/partition surface.

The vast majority of these are installed for "photo period" or also called "short day length" control requirements. The fabrics commonly used for this are the black/silver laminated poly or LS Hortiroll Revolux White/White. As the heating cost increases, we are beginning to use clear or opaque fabrics (such as the LS ILS series, Solar woven, or for some applications a clear vinyl) as well for partition walls, or drop walls, to divide or separate growing zones for different temperature control requirements. Some of these are also being installed on perimeter or exterior walls for partial shade or additional insulation by creating a small cavity of "dead" air space on exterior side or gable walls.

These walls can be supplied with a 2" tube motor which fits inside the roll up tube and is limited only by the height, length, and the required fabric cover weight. For longer lengths, a full size RW45 gear drive unit can be supplied. Manual operators are also available.



MONORAIL

When you need to move your product around more efficiently, and save on labour costs, why not consider a Monorail System? Whether you are filling your greenhouse with new cuttings, or moving out all your product for shipping, a Monorail System will allow you to transport multiple trays of product, thereby saving on labour costs.

Our team at VRE is the experienced choice when it comes to designing and installing a monorail system to fit into your existing greenhouse or to implement in new construction. Our system can be adapted to fit both, freestanding greenhouse applications, or gutter connected. The system can be used for a variety of style of carts, including our unique monorail transport cart, or hose trolley cart. By manufacturing the components in house, we have the ability to provide custom designs to fit your specific application.



AGRISTACK™ BERRY BINS & POULTRY MODULES

VRE Systems has significant expertise in the agricultural sector, such as the poultry, & berry industry. We also fabricate heavy duty carts that can be used for conveyance in the agricultural sector, on farms abroad including feeding livestock or in equestrian facilities and many others.



AGRISTACK™

Part Number:

[CALL FOR DETAILS](#)

- 42.75"W x 83"L x 43.56"H
- Knock down design for ease of shipping, storage, & loading product
- Holds approximately 10% more pots than the traditional wood counterparts (approx. 80 x 70 ltr pots) Use to transport & store Berry products & Berry plants
- Bases are designed to be compatible with most flow through racks
- Steel units provide faster cooling times than wood counterparts
- Durable steel construction with galvanized finish
- Units are stackable
- Capacity 600lbs



POULTRY MODULES

Part Number:

[CALL FOR DETAILS](#)

- Cage modules for the poultry processing industry
- Built & designed for use in automated processing plants
- Available in different sizes for chickens, turkeys and ducks
- Heavy duty welded steel construction
- Hot dip galvanized finish
- Stackable design maximizes transportation loads
- Multi-tiered drawer designs
- Built to spec & size as required by system designers



ABOUT VRE SYSTEMS



With 40+ years' experience and customer satisfaction providing products and services to the retail garden center, horticultural, greenhouse and agricultural industries.

All VRE products have been engineered to provide the highest return on your investment, to be a quality and long-lasting product, and to meet your exact business needs. Our commitment also includes being the leader in heat retention, light deprivation and shade curtain systems in North America and the obvious choice for the fabrication requirements of the greenhouse and garden center industries.





INSTALLATION

At VRE Systems, we specialize in providing top-quality installation services for screen curtain systems and retail displays tailored specifically to the horticulture and agriculture industry. With our extensive expertise and unwavering commitment to excellence, we are your trusted partner in enhancing the functionality and aesthetics of your greenhouses and garden centers. Contact us today to discuss your installation needs and discover how we can transform your environment with our installation services providing you a peace of mind.



NOTES

TERMS & CONDITIONS

TO ORDER*

FOR MORE INFO CONTACT OUR SALES REP TODAY!

info@vresystems.com | 1.800.499.4873 | vresystems.com

P 905.945.8863 | F 905.945.9294

7367 Young Street., RR1, Grassie, ON, CANADA, L0R 1M0

SATISFACTION

If, for any reason, you are not completely satisfied upon the receipt of your order, please call your sales representative.

DELIVERY

We will ship your order in the most efficient and economical way possible. VRE cannot be held responsible for any delay, loss or damage caused by our suppliers/carriers or conditions beyond our control.

PAYMENT

Payment by cash, cheque, EFT, Visa, MasterCard



**Products may not be exactly as shown.*



vresystems.com



info@vresystems.com

1.800.499.4873 | P 905.945.8863 | F 905.945.9294

7367 Young Street., RR1, Grassie, ON, CANADA, L0R 1M0